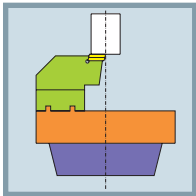


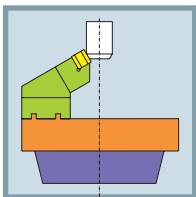
Centering and end facing tools Type A



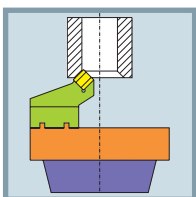
Facing



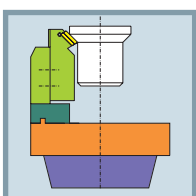
External chamfering



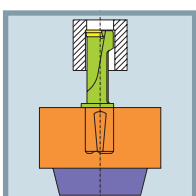
Internal chamfering



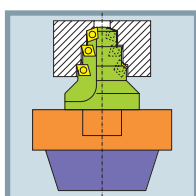
Turning



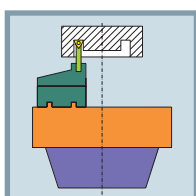
Recessing



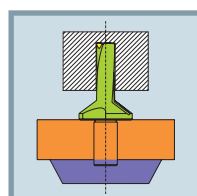
Step drilling



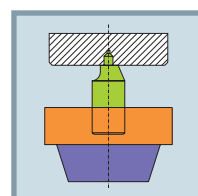
Face grooving



Drilling



Centering



Centering and end facing machining Type A and Type B

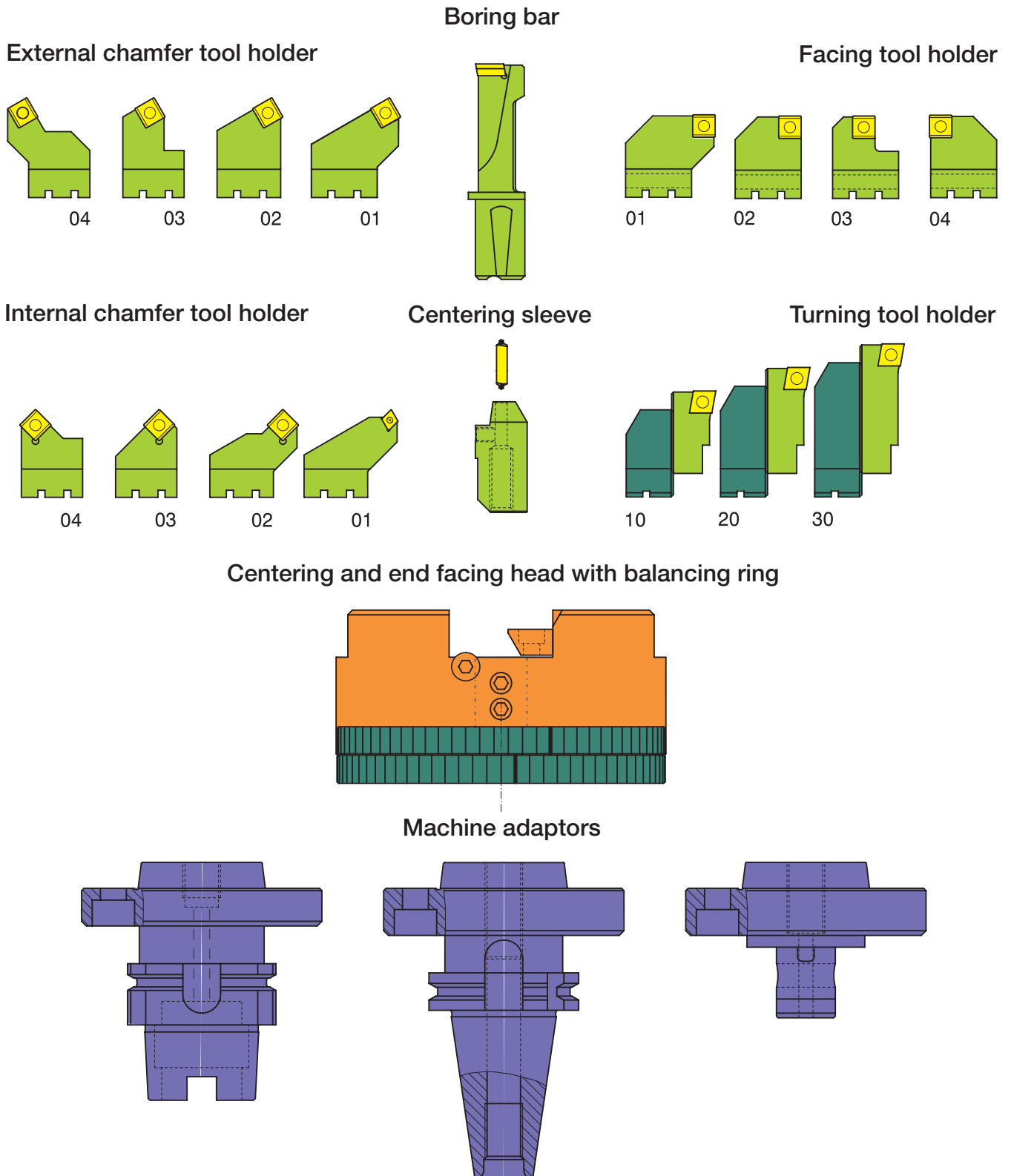
Overview: Centering and end facing machining Type A	12A-3
Centering and end facing tools	12A-4
Diameter in mm, continuously variable	12A-4
Tool head EBWK ... A	12A-5
Balancing ring EBWR ... A, 2-part	12A-6
Machine adaptors EBMA for EBWK ... A	12A-6
Machine adaptors EBMA for EBWK ... A	12A-7
Facing tool holder EBPH 90 ... 2112	12A-8
Facing tool holder EBPH 90 ... 09SC	12A-8
External chamfer tool holder EBFHA 45 ... 09SC	12A-9
External chamfer tool holder EBFHA 30 ... 09SC	12A-9
Internal chamfer tool holder EBFHI 45	12A-10
Turning tool holder EBDH ... according to your request	12A-10
Basic tool holder EBGHA ... - radially adjustable	12A-11
Turning tool holder EBDH ... - axially adjustable	12A-11
Turning tool holder EBDH ... - axially adjustable	12A-12
Centering sleeves EBZH ... A	12A-13
Step drill	12A-13
Internal boring bar	12A-13
Examples of applications	12A-14
SIX CUT tools with balancing ring	12A-16
Tool head EBWK ... B	12B-18
Facing tool holder EBPH ... 90 ... B 09 SC	12B-19
External chamfer tool holder EBFHA 45 ... B 09SC	12B-19
Internal chamfer tool holder EBFHI 45 ... B	12B-20
Centering sleeves EBZH ... B	12B-20

Other versions and dimensions upon request.

We reserve the right to make technical modifications.

All prices are net in EURO + VAT (value added tax).

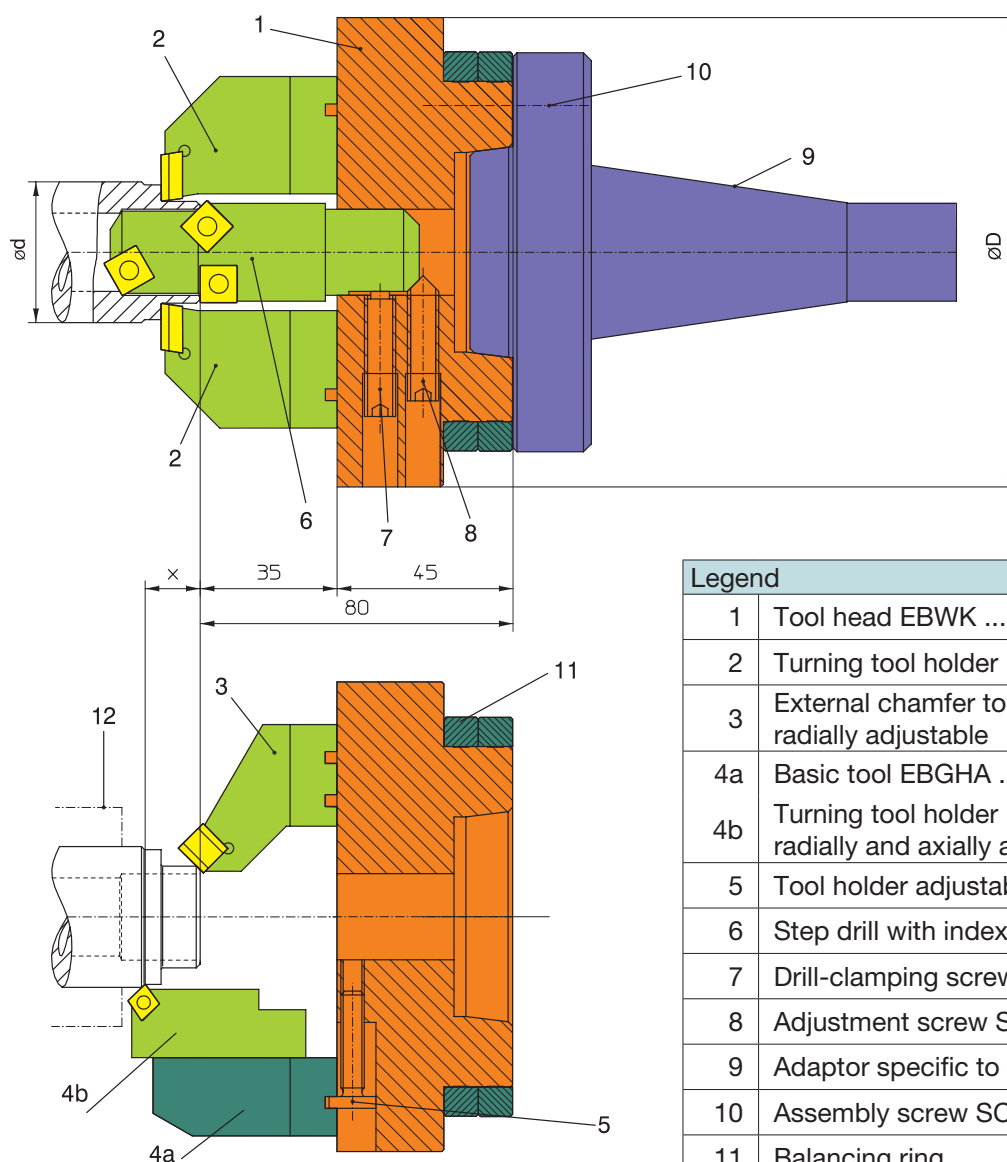
Overview: Centering and end facing machining Type A



Centering and end facing tools

Diameter in mm, continuously variable

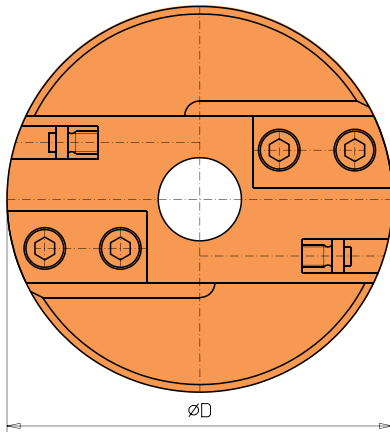
Head size	Facing \varnothing mm	Chamfering \varnothing mm	Turning length x mm
EBWK 100 ($\varnothing D = 102$)	0 up to 102	0 up to 100	Standard up to 40
EBWK 120 ($\varnothing D = 120$)	0 up to 120	0 up to 120	Standard up to 40
EBWK 140 ($\varnothing D = 140$)	0 up to 140	0 up to 140	Standard up to 40
Larger lengths upon request			



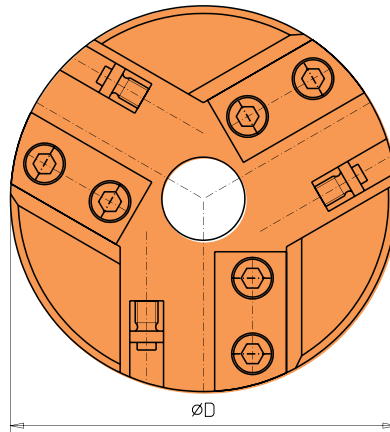
Legend	
1	Tool head EBWK ...
2	Turning tool holder EBDHX ...; radially adjustable
3	External chamfer tool holder EBFHA ...; radially adjustable
4a	Basic tool EBGHA ...; with adjustable
4b	Turning tool holder EBDHA ...; radially and axially adjustable
5	Tool holder adjustable screw EBSCHE ...
6	Step drill with indexable inserts EBSTB ...
7	Drill-clamping screw SCHW M8x20 DIN 913
8	Adjustment screw SCHW M8x20 DIN 914
9	Adaptor specific to machine tool
10	Assembly screw SCHI M10x25 DIN 912
11	Balancing ring
12	Watch axial and radial interference face

Tool head EBWK ... A ...

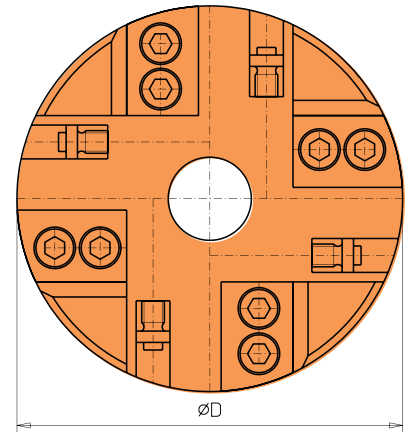
EBWK ... AR2



EBWK ... AR3



EBWK ... AR4



Product group 12A

Order no. with internal coolant	Adaptors for clamping holder	Ø D	Dis	
EBWK 100 AR2 IK	2	102	☆	
EBWK 100 AR3 IK	3	102	☆	
EBWK 100 AR4 IK	4	102	★	

Balancing ring see page 12A-6.

Order no. with internal coolant	Adaptors for clamping holder	Ø D	Dis	
EBWK 120 AR2 IK	2	120	☆	
EBWK 120 AR3 IK	3	120	☆	
EBWK 120 AR4 IK	4	120	★	

Balancing ring see page 12A-6.

Order no. with internal coolant	Adaptors for clamping holder	Ø D	Dis	
EBWK 140 AR2 IK	2	140	☆	
EBWK 140 AR3 IK	3	140	☆	
EBWK 140 AR4 IK	4	140	☆	

Balancing ring see page 12A-6.

Product group 21

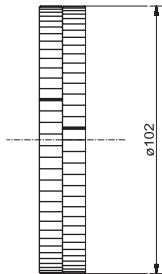
Spare parts	Clamping strip	Adjusting screw
For EBWK ... 100	EBKL 100-2 to 100-4	EBSCH100
For EBWK ... 120	EBKL 120-2 to 120-4	EBSCH120
For EBWK ... 140	EBKL 140-2 to 140-4	EBSCH140

★ = ex stock

☆ = short lead time

☐ = upon request

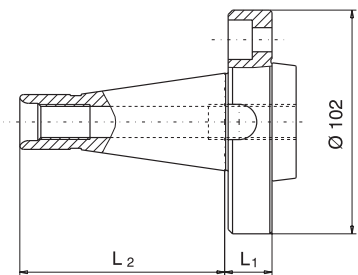
Balancing ring EBWR ... A, 2-part



Product group 12F

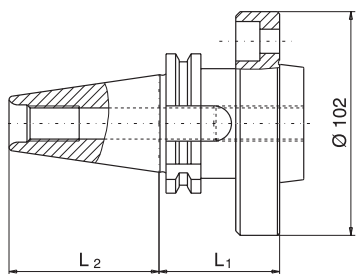
Order no.			Dis	
EBWR 100 AR			★	

Machine adaptors EBMA for EBWK ... A ...

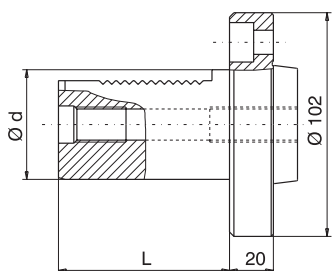


Product group 12F

Steep angle taper -> DIN 2080				
Order no.	L ₁	L ₂	Dis	
EBMA SK30 A 2080	21.6	68.4	☆	
EBMA SK40 A 2080	21.6	93.4	★	



Steep angle taper -> DIN 69871				
Order no.	L ₁	L ₂	Dis	
EBMA SK30 A 69871	55	47.8	☆	
EBMA SK40 A 69871	55	68.4	★	



Straight shank -> DIN 69880				
Order no.	d	L	Dis	
EBMA ZV30 A 69880	30	55	☐	
EBMA ZV40 A 69880	40	63	☐	
EBMA ZV50 A 69880	50	78	☐	

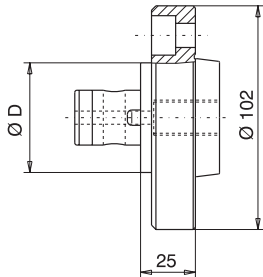
★ = ex stock

☆ = short lead time

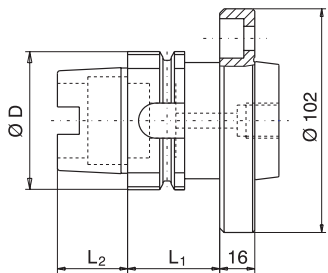
☐ = upon request

Machine adaptors EBMA for EBWK ... A ...

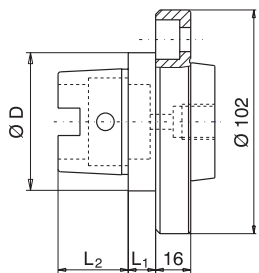
Product group 12F



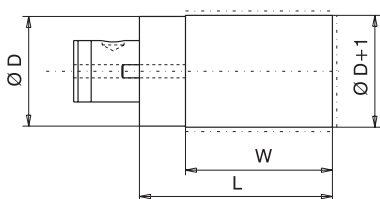
ABSK - Komet-compatible				
Order no.	D	L ₁	Dis	
EBMA ABSK 50	50	31	☆	
EBMA ABSK 63	63	38	★	



HSK - Hollow shank taper -> DIN 69893 Form A					
Order no.	D	L ₁	L ₂	Dis	
EBMA HSK 50 A	50	42	25	☆	
EBMA HSK 63 A	63	42	32	★	



HSK - Hollow shank taper -> DIN 69893 Form C					
Order no.	D	L ₁	L ₂	Dis	
EBMA HSK 50 C	50	12.5	25	★	
EBMA HSK 63 C	63	12.5	32	★	

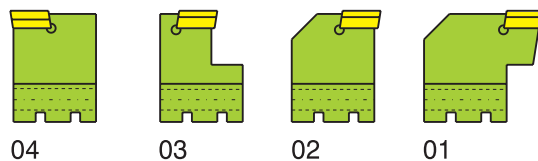
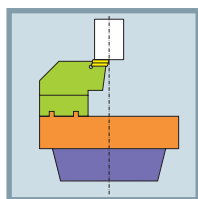


Blank for HSK and ABSK					
Order no.					
Upon request					

★ = ex stock

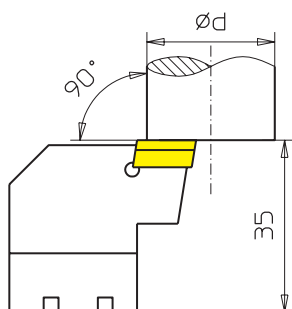
☆ = short lead time

☐ = upon request



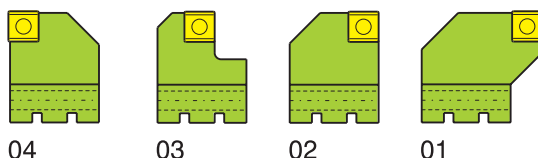
Facing tool holder EBPH 90 ... 2112

Product group 12A



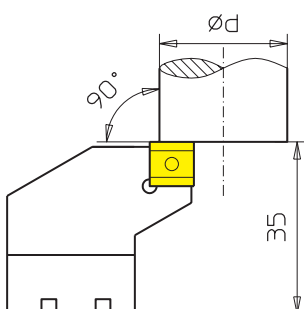
With tool head →	...100	...120	...140	Dis	
Order no.	Adjustable up to diameter			Dis	
EBPH 9001 AR 2112	0-44	0-62	0-82	★	
EBPH 9002 AR 2112	20-64	20-82	20-102	☆	
EBPH 9003 AR 2112	40-84	40-102	40-122	☆	
EBPH 9004 AR 2112	58-102	58-120	58-140	☆	

Indexable insert see Product information 05A.
Tool holder also available with indexable inserts of your choice.



Facing tool holder EBPH 90 ... 09SC

Product group 12A



With tool head →	...100	...120	...140	Dis	
Order no.	Adjustable up to diameter			Dis	
EBPH 9001 AR 09SC	0-44	0-62	0-82	★	
EBPH 9002 AR 09SC	20-64	20-82	20-102	☆	
EBPH 9003 AR 09SC	40-84	40-102	40-122	☆	
EBPH 9004 AR 09SC	58-102	58-120	58-140	☆	

Indexable insert see Product information 05A.
Tool holder also available with indexable inserts of your choice.

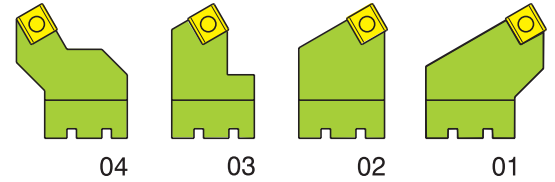
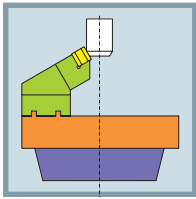
Product group 21

Spare parts	Wedge clamp	Double threaded pin
For EBPH 2112	PR Y2105	DG M5x15 N
	Eccentric clamp	Shim seat
For EBPH 0809	SX05x12	U 0809

★ = ex stock

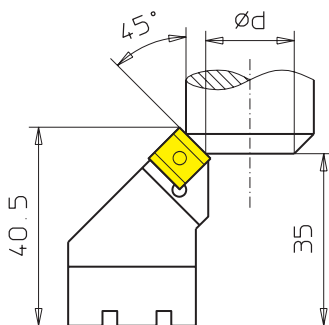
☆ = short lead time

☐ = upon request



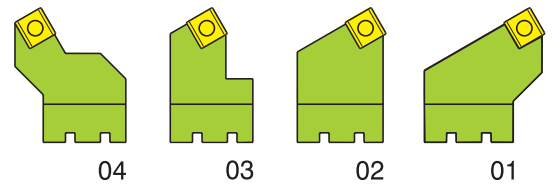
External chamfer tool holder EBFHA 45 ... 09SC

Product group 12A



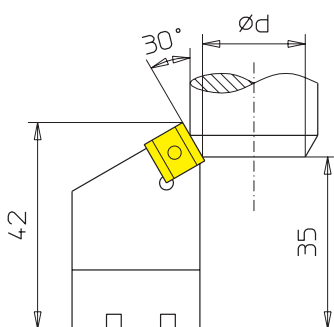
With tool head →	...100	...120	...140	Dis	
Order no.	Adjustable up to diameter				
EBFHA 4501AR 09SC	0-25	0-43	0-63	★	
EBFHA 4502AR 09SC	18-46	18-64	18-84	★	
EBFHA 4503AR 09SC	38-68	38-86	38-106	★	
EBFHA 4504AR 09SC	68-102	68-120	68-140	☆	

Indexable insert see Product information 05A.
Tool holder also available with indexable inserts of your choice.



External chamfer tool holder EBFHA 30 ... 09SC

Product group 12A



With tool head →	...100	...120	...140	Dis	
Order no.	Adjustable up to diameter				
EBFHA 3001AR 09SC	0-25	0-43	0-63	☆	
EBFHA 3002AR 09SC	18-46	18-64	18-84	☆	
EBFHA 3003AR 09SC	38-68	38-86	38-106	☆	
EBFHA 3004AR 09SC	68-102	68-120	68-140	☆	

Indexable insert see Product information 05A.
Tool holder also available with indexable inserts of your choice.

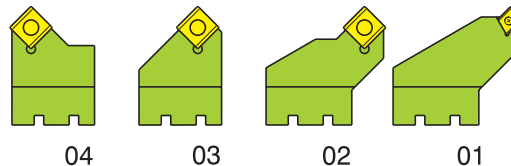
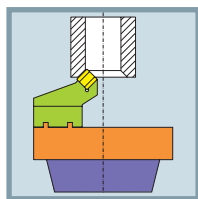
Product group 21

Spare parts	Screw	
For EBFHA 09SC	SCHT15 M3,5x10 SY	

★ = ex stock

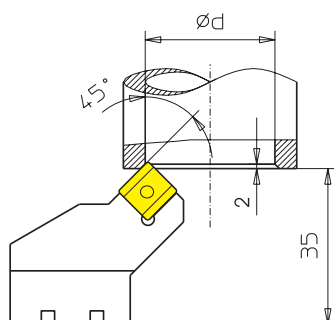
☆ = short lead time

□ = upon request



Internal chamfer tool holder EBFHI 45 ...

Product group 12A

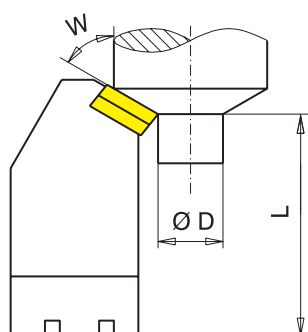


With tool head →	...100	...120	...140	Dis	
Order no.	Adjustable up to diameter				
EBFHI 4501 AR 05EP	0-28	0-46	0-66	★	
EBFHI 4502 AR 09SC	14-40	14-58	14-78	★	
EBFHI 4503 AR 09SC	39-65	39-83	39-103	★	
EBFHI 4504 AR 09SC	65-102	65-120	65-140	☆	

Indexable insert see Product information 05A.
Tool holder also available with indexable inserts of your choice.

Turning tool holder EBDH ... according to your request

Product group 12A



We can manufacture this turning tool holder EBDH ... according to your request

In your order please indicate following details:

L = Length of turning operation upon request

D = Diameter upon request

W = Turning angle upon request

Indexable insert see Product information 05A.

Turning tool holder also available with indexable inserts of your choice.

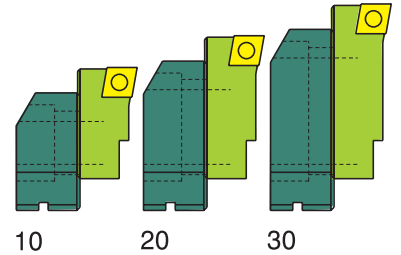
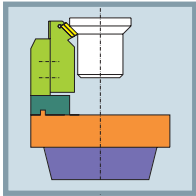
Product group 21

Spare parts	Phillips screw	
For EBFHI 05 EP	SCHT07 M2,2x4	
Spare parts	Phillips screw	
For EBFHI 09 SC	SCHT15 M3,5x10 SY	

★ = ex stock

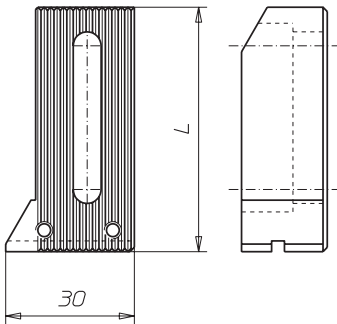
☆ = short lead time

☐ = upon request



Basic tool holder EBGHA ... - radially adjustable for axially adjustable turning tool holder EBDH ...

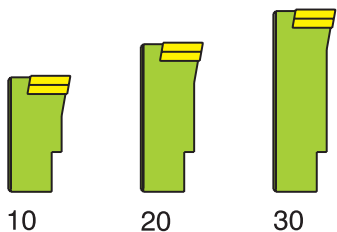
Product group 12A



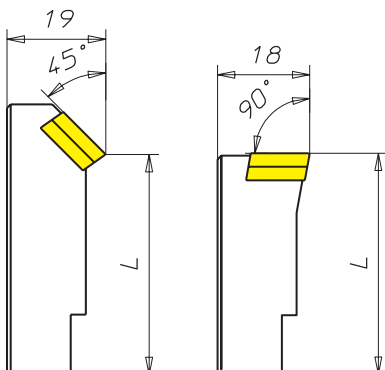
With tool head →	...100	...120	...140		
	Adjustable up to diameter				
	0-24	0-42	0-62		
Order no.	Length of turning operation	L		Dis	
EBGHA 10 AR	0-10	37		★	
EBGHA 20 AR	0-20	47		★	
EBGHA 30 AR	0-30	57		★	
Leg extension EBGHFV				☆	

Turning tool holder EBDH ... - axially adjustable

Product group 12A



With tool head →	...100	...120	...140		
	Adjustable up to diameter				
	0-24	0-42	0-62		
Order no.	Length of turning operation x	Setting Angle	L	Dis	
EBDH 4510 AR2112	0-10	45°	35.5	★	
EBDH 4520 AR2112	10-20	45°	45.5	★	
EBDH 4530 AR2112	20-30	45°	55.5	★	
Indexable insert see Product information 05A. Tool holder also available with indexable inserts of your choice.					



With tool head →	...100	...120	...140		
	Adjustable up to diameter				
	0-24	0-42	0-62		
Order no.	Length of turning operation x	Setting Angle	L	Dis	
EBDH 9010 AR2112	0-10	90°	35.5	★	
EBDH 9020 AR2112	10-20	90°	45.5	★	
EBDH 9030 AR2112	20-30	90°	55.5	★	
Indexable insert see Product information 05A. Tool holder also available with indexable inserts of your choice.					

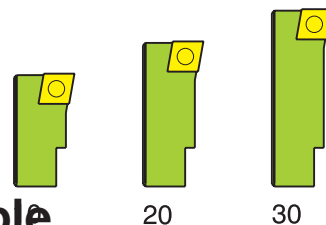
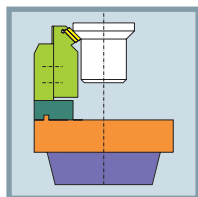
Product group 21

Spare parts		
Order no.	Wedge clamp	Double threaded pin
EBDH ... 2112	PR Y2105	DG M5x15 N

★ = ex stock

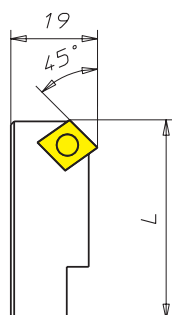
☆ = short lead time

☐ = upon request



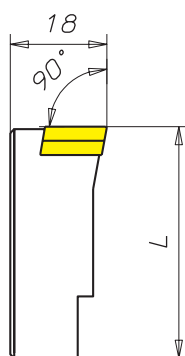
Turning tool holder EBDH ... - axially adjustable

Product group 12A



With tool head →	...100	...120	...140		
	Adjustable up to diameter				
	0-24	0-42	0-62		
Order no.	Length of turning operation x	Setting Angle	L	Dis	
EBDH 4510 AR09CC	0-10	45°	35.5	★	
EBDH 4520 AR09CC	10-20	45°	45.5	★	
EBDH 4530 AR09CC	20-30	45°	55.5	★	

Indexable insert see Product information 05A.
Tool holder also available with indexable inserts of your choice.



With tool head →	...100	...120	...140		
	Adjustable up to diameter				
	0-24	0-42	0-62		
Order no.	Length of turning operation x	Setting Angle	L	Dis	
EBDH 9010 AR09CC	0-10	90°	35.5	★	
EBDH 9020 AR09CC	10-20	90°	45.5	★	
EBDH 9030 AR09CC	20-30	90°	55.5	★	

Indexable insert see Product information 05A.
Tool holder also available with indexable inserts of your choice.

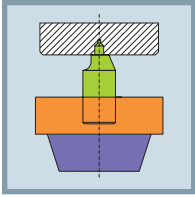
Product group 21

Spare parts	Screw
For EBDH ... 09CC	SCHT15 M3,5x10 SY

★ = ex stock

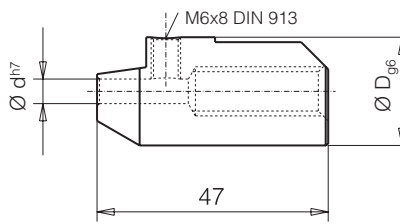
☆ = short lead time

☐ = upon request



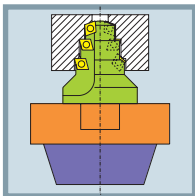
Centering sleeves EBZH ... A

Product group 12A

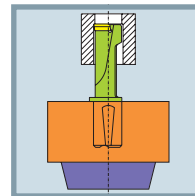
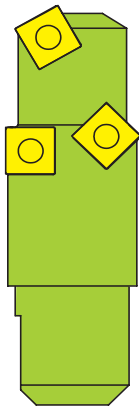


Centering sleeves D = 22 = Typ A

Order no.	Dimensions in mm		Dis	
	Ø D _{g6}	d _{H7}		
EBZH 22 04.00 A	22	4.0	★	
EBZH 22 05.00 A	22	5.0	★	
EBZH 22 06.30 A	22	6.3	★	
EBZH 22 08.00 A	22	8.0	★	
EBZH 22 10.00 A	22	10.0	★	
EBZH 22 12.50 A	22	12.5	★	
EBZH 22 16.00 A	22	16.0	★	
Other versions and dimensions upon request. For compatible tool head see page 12A-5.				



Step drill



Internal boring bar



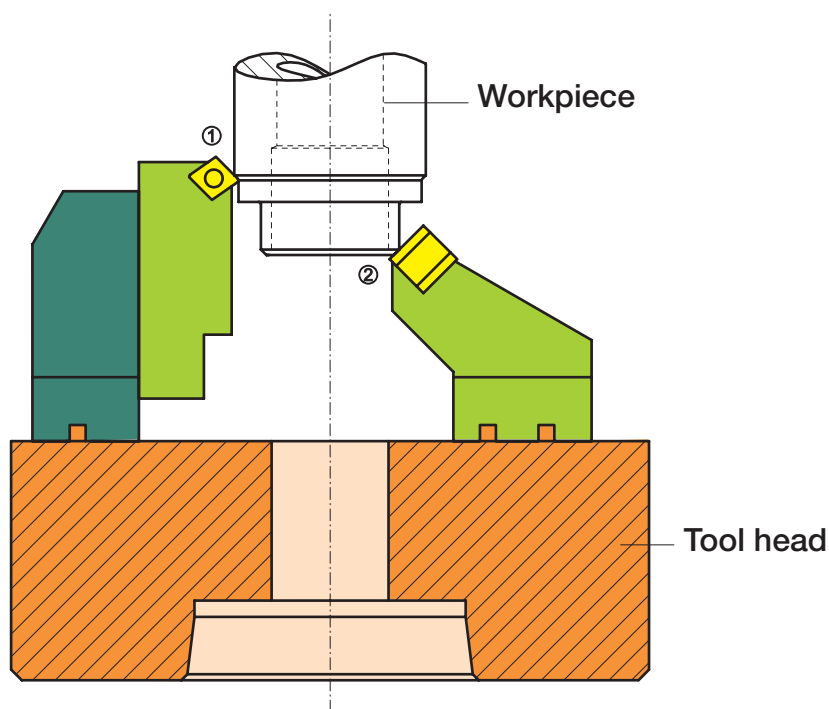
★ = ex stock

☆ = short lead time

□ = upon request

Examples of applications

End facing the step drill, radial and axial adjustable.

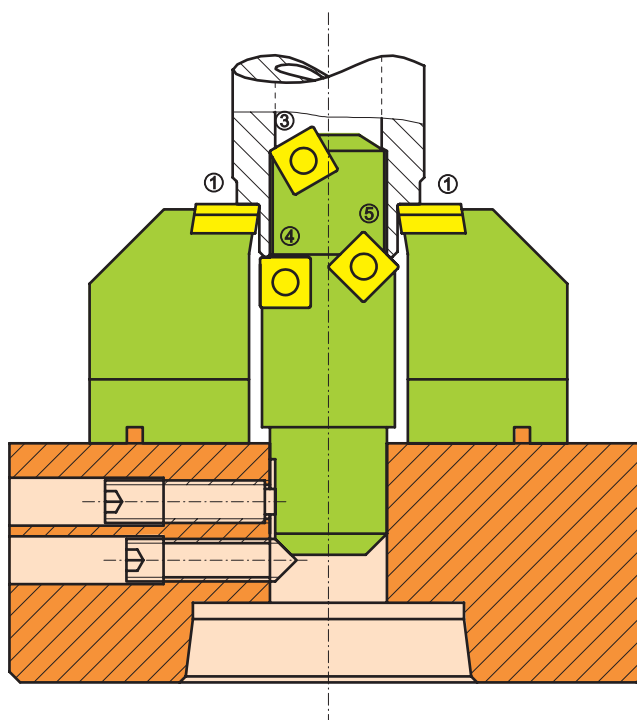


Machine adaptors selectable

- 1 = Turning
- 2 = External chamfering
- 3 = Recessing
- 4 = Facing
- 5 = Internal chamfering

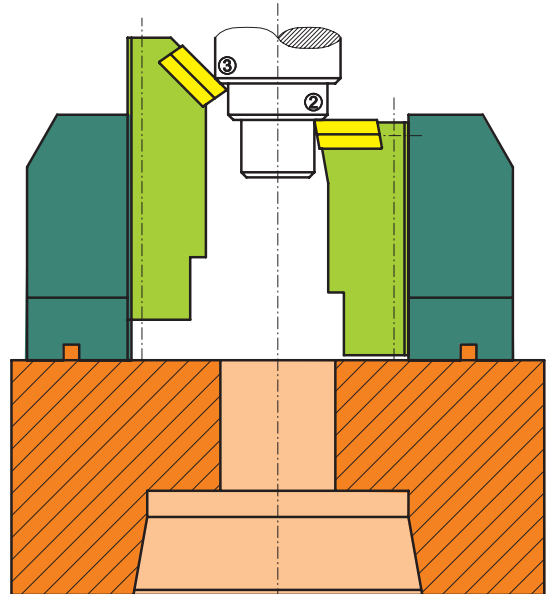
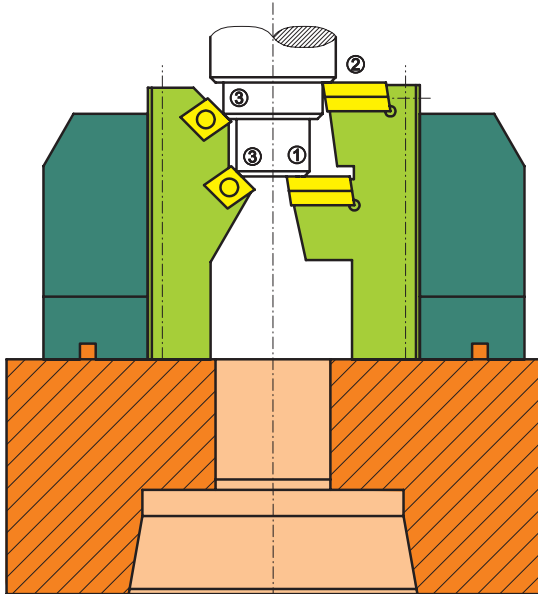
Equipped with:

- 3 Turning tool holders,
radially and axially adjustable
- 1 Tool holder for chamfering,
radially adjustable
- 1 Step drill for boring,
facing and internal chamfering



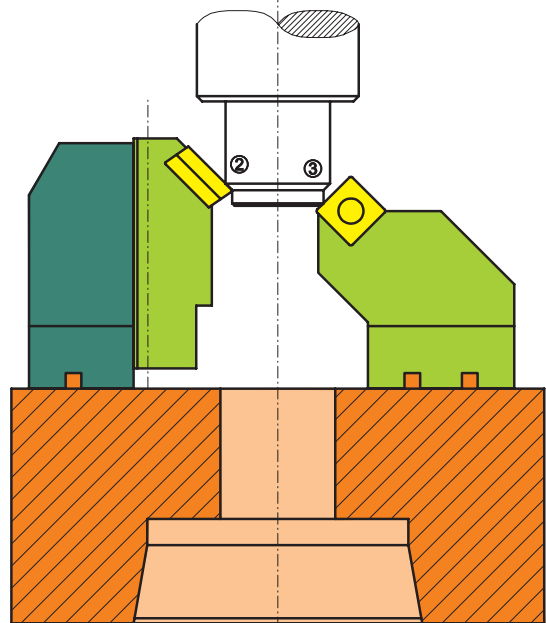
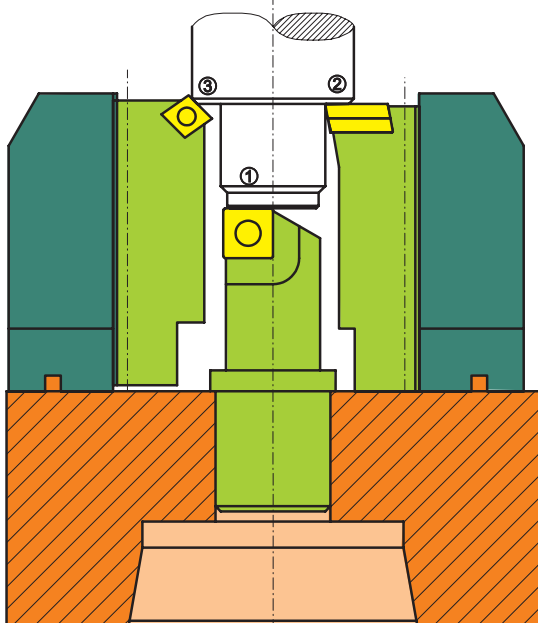
Examples of applications

End facing Type A with multi-step socket,
radially and axially adjustable.



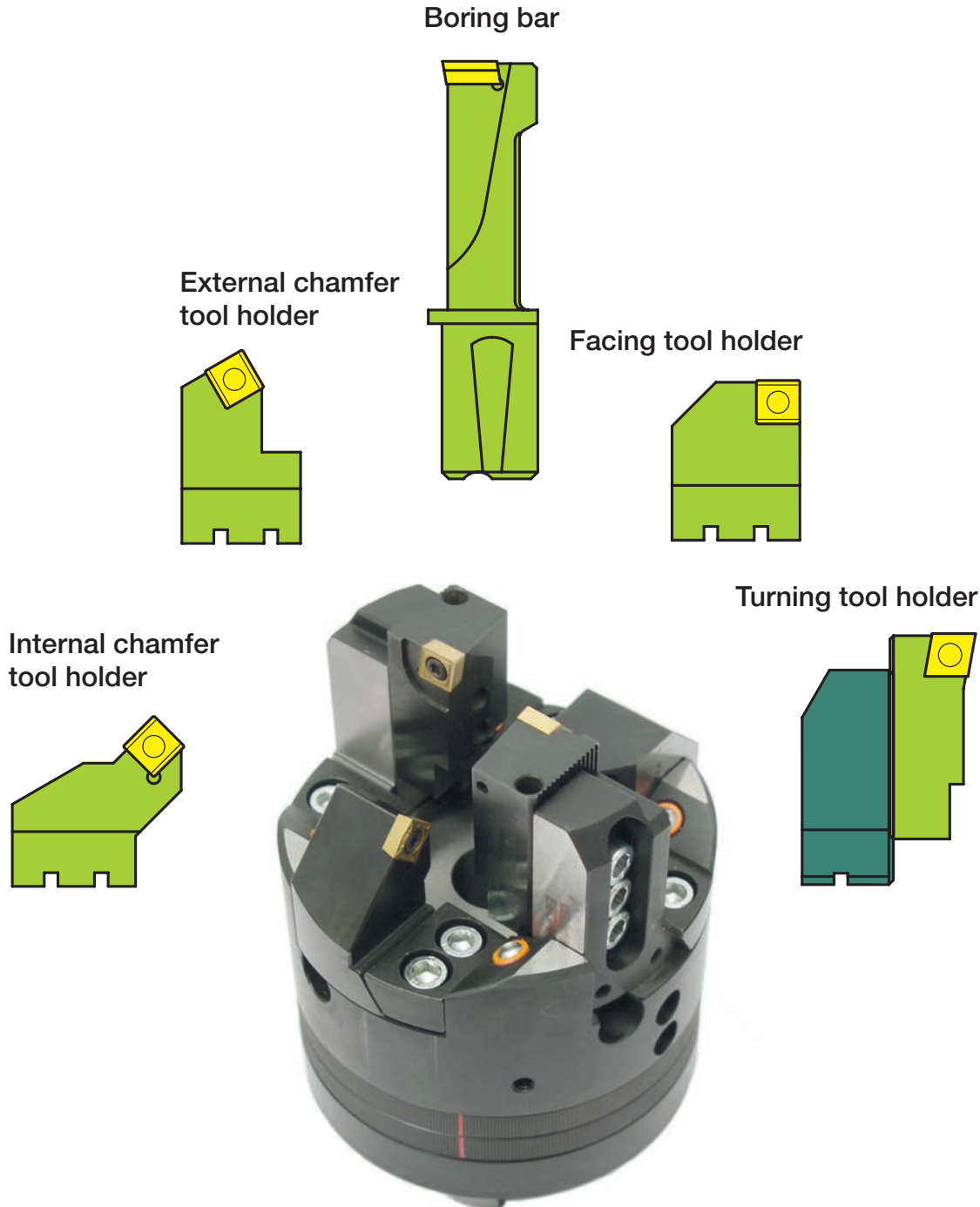
Equipped with: 4 Turning tool holders,
radially and axially adjustable

1 = Facing
2 = Turning
3 = External chamfering



Equipped with:
3 Turning tool holders, radially and axially adjustable
1 Tool holder for chamfering, radially adjustable
1 Facing drill bar

1 = Facing
2 = Turning
3 = External chamfering



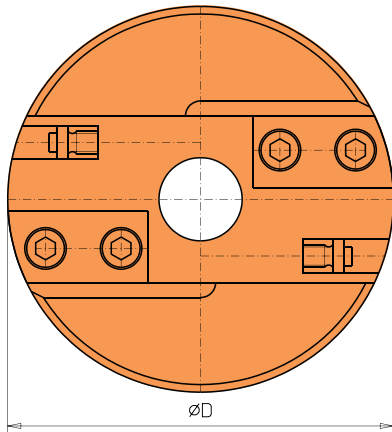
SIX CUT - tools with balancing ring

Centering and end facing tools Type B

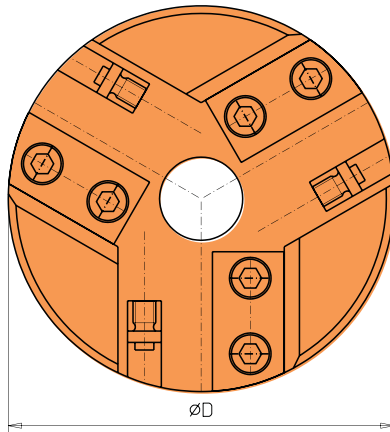


Tool head EBWK ... B ...

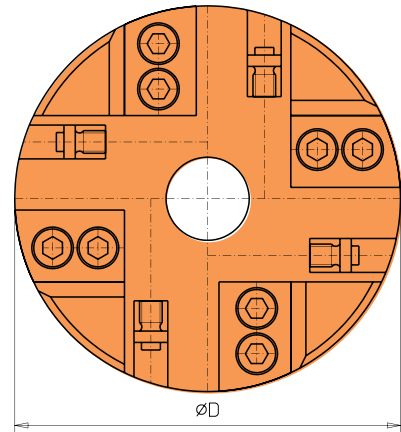
EBWK ... BR2



EBWK ... BR3



EBWK ... BR4



Product group 12B

Order no. (with internal coolant)	Adaptors for clamping holder	Ø D	Dis	
EBWK 60 BR2 IK	2	60	★	
EBWK 80 BR2 IK	2	80	☆	
EBWK 80 BR3 IK	3	80	☆	
EBWK 80 BR4 IK	4	80	★	

Please see the Product information 12D Sixcut Type M.

For compatible machine adaptors see page 12D-5.

For a compatible holder see page 12B-19 up to page 12B-20.

For compatible centering sleeves see page 12B-20.

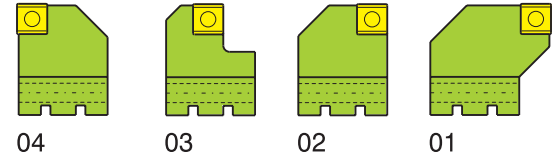
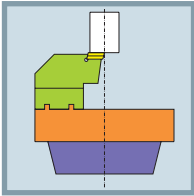
Product group 21

Spare parts	Clamping strip	Adjusting screw
For EBWK ... 60 BR2	EBKL 0602 B	EBSCH 0602 B
For EBWK ... 80 BR2	EBKL 0802 B	EBSCH 0802 B
For EBWK ... 80 BR3	EBKL 0803 B	EBSCH 0803 B
For EBWK ... 80 BR4	EBKL 0804 B	EBSCH 0804 B

★ = ex stock

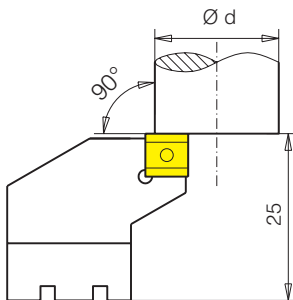
☆ = short lead time

☐ = upon request



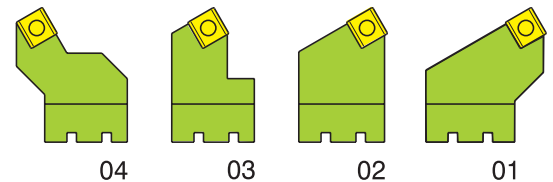
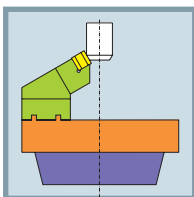
Facing tool holder EBPH ... 90 ... B 09 SC

Product group 12B



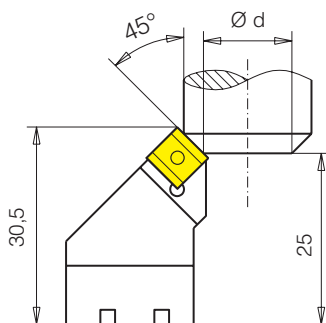
With tool head →	...60	...80		Dis	
Order no.	Adjustable up to diameter			Dis	
EBPH 9001 BR 09SC	0-11	0-21		☆	
EBPH 9002 BR 09SC	20-31	20-41		☆	
EBPH 9003 BR 09SC	40-51	40-61		☆	
EBPH 9004 BR 09SC	58-61	58-81		☆	

Indexable insert see Product information 05A.
Tool holder also available with indexable inserts of your choice.



External chamfer tool holder EBFHA 45 ...B 09SC

Product group 12B



With tool head →	...60	...80		Dis	
Order no.	Adjustable up to diameter			Dis	
EBFHA 4501BR 09SC	0-8	0-18		☆	
EBFHA 4502BR 09SC	18-25	18-35		☆	
EBFHA 4503BR 09SC	35-45	35-55		☆	
EBFHA 4504BR 09SC	55-60	55-80		☆	

Indexable insert see Product information 05A.
Tool holder also available with indexable inserts of your choice.

External chamfer tool holder are also available with other chamfer angles.
Example see page 12A-9.

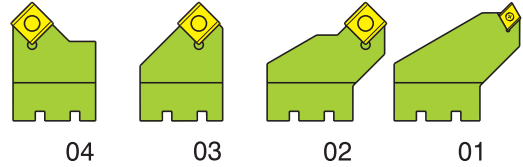
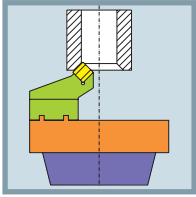
Product group 21

Spare parts	Screw	
For EB 09SC	SCHT15 M3,5x10 SY	

★ = ex stock

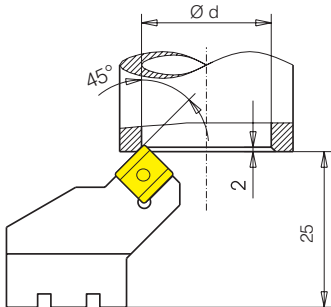
☆ = short lead time

☐ = upon request



Internal chamfer tool holder EBFHI 45 ... B

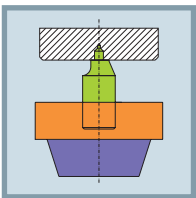
Product group 12B



With tool head →	...60	...80		Dis	
Order no.	Adjustable up to diameter			Dis	
EBFHI 4501 BR 05EP	0-8	0-18		☆	
EBFHI 4502 BR 09SC	18-25	18-35		☆	
EBFHI 4503 BR 09SC	35-45	35-55		☆	
EBFHI 4504 BR 09SC	55-60	55-80		☆	

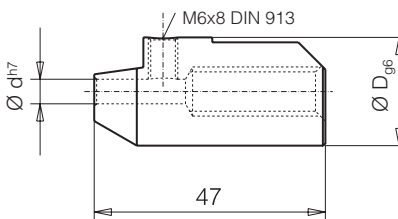
Indexable insert see Product information 05A.
Tool holder also available with indexable inserts of your choice.

The internal chamfer tool holder are also available with other chamfer angles.
Example see page 12A-10.



Centering sleeves EBZH ... B

Product group 12B



Order no.	Dimensions in mm		Dis	
	$\varnothing D_{g6}$	d_{H7}		
EBZH 16 04.00 B	16	4.0	☆	
EBZH 16 05.00 B	16	5.0	☆	
EBZH 16 06.30 B	16	6.3	☆	
EBZH 16 08.00 B	16	8.0	☆	
EBZH 16 10.00 B	16	10.0	☆	

Other versions and dimensions upon request.
For compatible tool head see page 12B-18.

Centering sleeves D = 16 = Typ B

Product group 21

Spare parts	Screw	
For EBFHI 05 EP	SCHT07 M2,2x04	
Spare parts	Screw	
For EBFHI 09 SC	SCHT15 M3,5x10 SY	

★ = ex stock

☆ = short lead time

□ = upon request