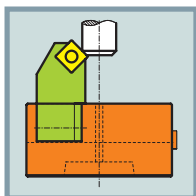


Centering and end facing tools Type M

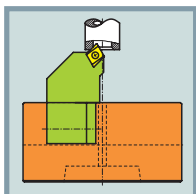
SIX CUT



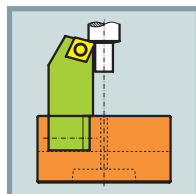
External chamfering



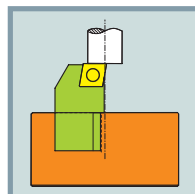
Internal chamfering



Turning



Facing





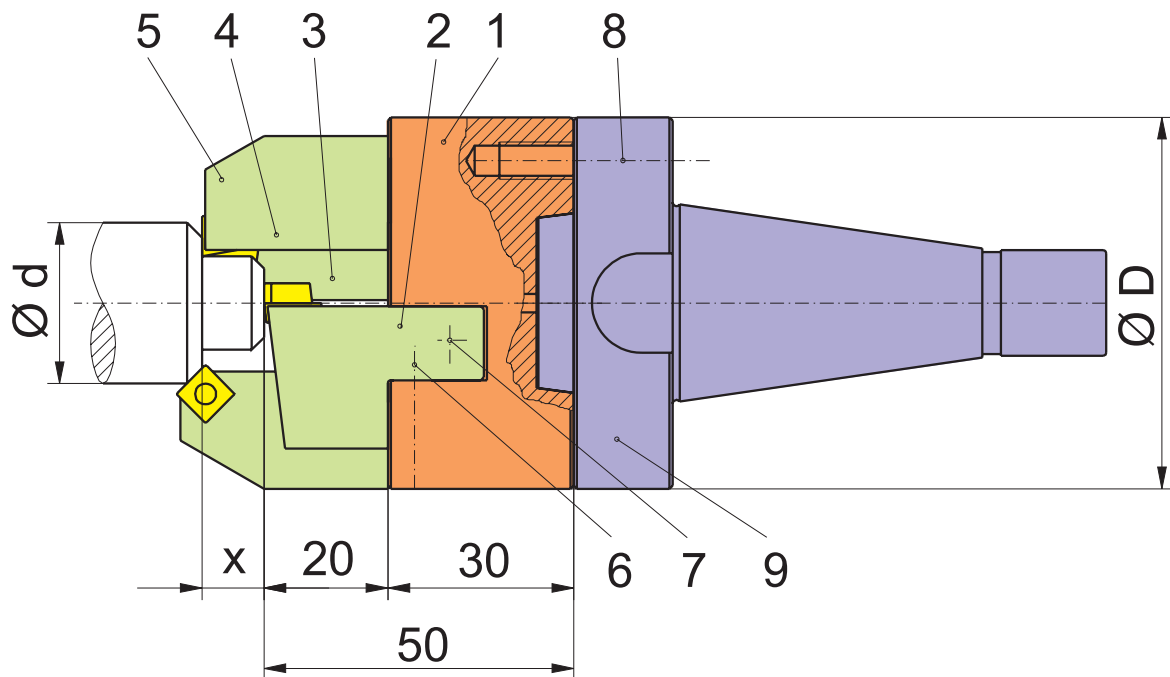
Centering and end facing tools Type M

Diameter in mm, continuously variable	12D-3
Tool head EBWK ... MR ... - Type M	12D-4
Machine adaptors for EBWK ... M	12D-5
Machine adaptors for EBWK ... M	12D-6
Facing tool holder EBPH 90 ... 09SC	12D-7
Facing tool holder EBPH 90 ... 09CC	12D-7
Tool holder for chamfering EBFHA 45 ... 09SC	12D-8
Tool holder for chamfering EBFHA 30 ... 09SC	12D-8
Internal chamfer tool holder EBFHI 45	12D-9
Turning tool holder EBDHX ... 09CC	12D-9
Examples of tool holders	12D-10

Other versions and dimensions upon request.
We reserve the right to make technical modifications.
All prices are net in EURO + VAT (value added tax).

Diameter in mm, continuously variable

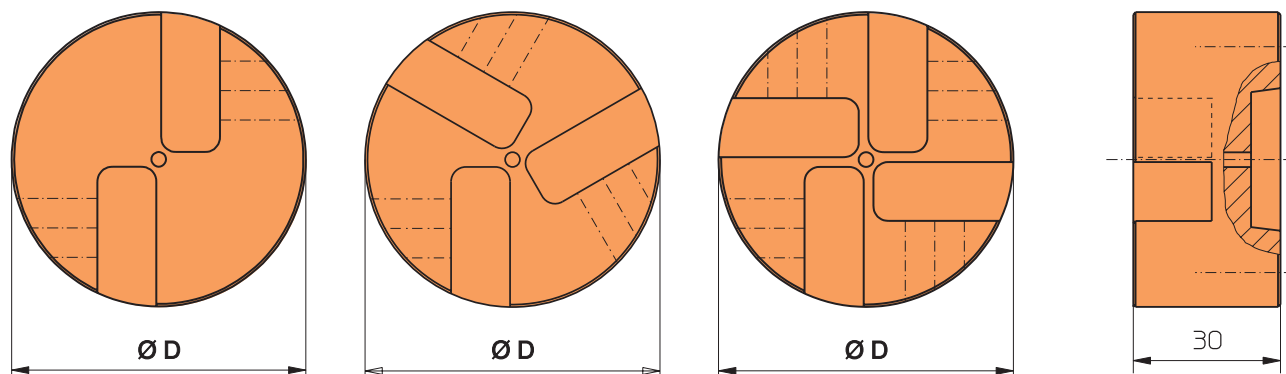
Head size	Facing \varnothing	Chamfering \varnothing	Turning length x mm
EBWK 060 ($\varnothing D = 60$)	0-60	0-60	0-30
EBWK 080 ($\varnothing D = 80$)	0-80	0-80	0-30
Larger lengths upon request			



Legend	
1	Tool head EBWK ...
2	Facing tool holder EBPH ...
3	External chamfer tool holder EBFHA ...
4	Turning tool holder 90° EBDHX ...
5	Turning tool holder 45° EBDHX ...
6	Tool holder with clamping screw
7	Tool holder adjusting screw
8	Assembly screw
9	Adaptor specific to machine tool

Tool head EBWK ... MR ... - Type M

EBWK ... MR2 EBWK ... MR3 EBWK ... MR4



Product group 12D

Order no. with internal coolant	Adaptors for clamping holder	Ø D	Dis
EBWK 060 MR2 IK	2	60	☆
EBWK 060 MR3 IK	3	60	☆
EBWK 060 MR4 IK	4	60	☆

Order no. with internal coolant	Adaptors for clamping holder	Ø D	Dis
EBWK 080 MR2 IK	2	80	☆
EBWK 080 MR3 IK	3	80	☆
EBWK 080 MR4 IK	4	80	☆

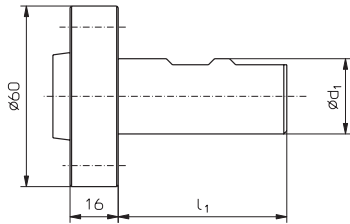
Assembly and functional sketch see page 12D-3.

Product group 21

Spare parts	Assembly screw	Tool holder with clamping screw
EBWK 060 MR ...	SCHI M6x20 DIN912	SCHW M5x08 DIN 914
EBWK 080 MR ...	SCHI M6x20 DIN912	SCHW M5x08 DIN 914
		SCHW M5x20 DIN 914

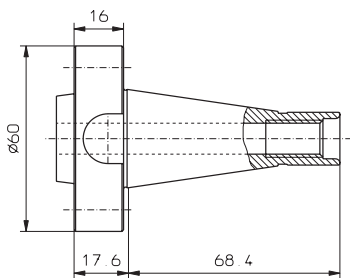
★ = ex stock ☆ = short lead time ☐ = upon request

Machine adaptors for EBWK ... M ...



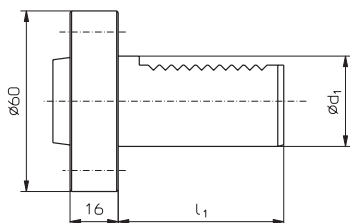
Product group 12F

Straight shank -> DIN 1835				
Order no.	d ₁	l ₁	Dis	
EBMA ZB20 M 1835	20	50	☆	
EBMA ZB25 M 1835	25	56	☆	



Product group 12F

Steep angle taper -> DIN 729 and DIN 2080				
Order no.			Dis	
EBMA SK25 M 729			☆	
EBMA SK30 M 2080			☆	



Product group 12F

Straight shank -> DIN 69880				
Order no.	d ₁	l ₁	Dis	
EBMA ZV20 M 69880	20	40	☆	
EBMA ZV25 M 69880	25	48	☆	
EBMA ZV30 M 69880	30	55	☆	

Additional adaptors see page 12D-6 and upon request.
For compatible tool head see page 12D-4.

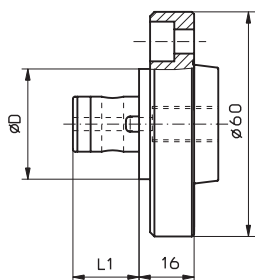
★ = ex stock

☆ = short lead time

□ = upon request

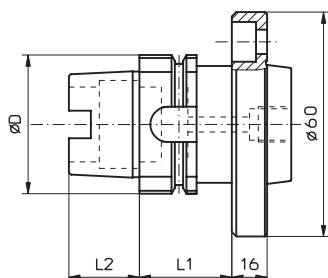
Machine adaptors for EBWK ... M ...

Product group 12F



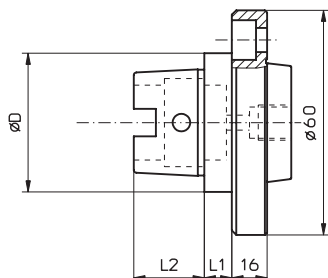
ABSK - Komet-compatible				
Order no.	D	L ₁	Dis	
EBMA ABSK 40 M	40	26	<input type="checkbox"/>	
EBMA ABSK 50 M	50	31	<input type="checkbox"/>	

Product group 12F



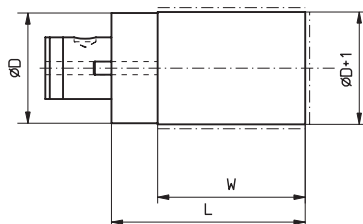
HSK - Hollow shank taper -> DIN 69893 Form A				
Order no.	D	L ₁	L ₂	Dis
EBMA HSK 32 A M	32	35	16	<input type="checkbox"/>
EBMA HSK 40 A M	40	35	20	<input type="checkbox"/>

Product group 12F



HSK - Hollow shank taper -> DIN 69893 Form C				
Order no.	D	L ₁	L ₂	Dis
EBMA HSK 32 C M	32	10	16	<input type="checkbox"/>
EBMA HSK 40 C M	40	10	20	<input type="checkbox"/>

Product group 12A



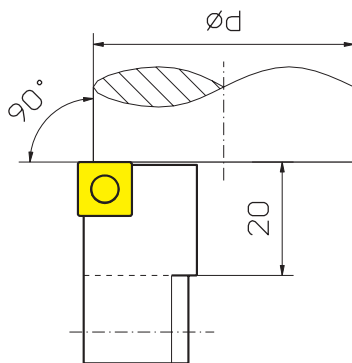
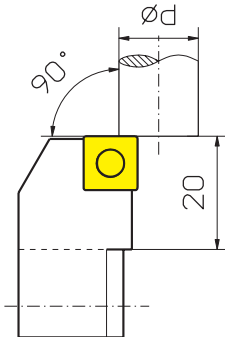
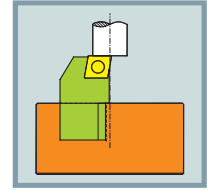
Blank for HSK and ABSK				
Order no.				
Upon request				

Additional adaptors see page 12D-5 and upon request.
For compatible tool head see page 12D-4.

★ = ex stock

☆ = short lead time

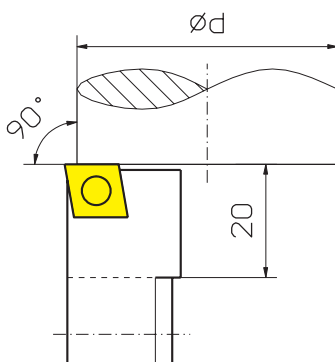
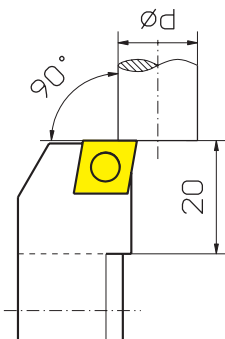
= upon request



Facing tool holder EBPH 90 ... 09SC

Product group 12D

Fits in tool head →	...060	...080	Dis	
Order no.	Adjustable up to diameter		Dis	
EBPH 9001 MR 09SC	0-34	0-54	☆	
EBPH 9002 MR 09SC	24-58	24-78	☆	
Turning inserts: see catalog group 05. Tool holder also available with indexable inserts of your choice.				



Facing tool holder EBPH 90 ... 09CC

Product group 12D

Fits in tool head →	...060	...080	Dis	
Order no.	Adjustable up to diameter		Dis	
EBPH 9001 MR 09CC	0-34	0-54	☆	
EBPH 9002 MR 09CC	24-58	24-78	☆	
Turning inserts: see catalog group 05. Tool holder also available with indexable inserts of your choice.				

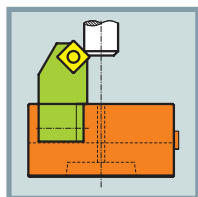
Product group 21

Spare parts	Indexable insert with clamping screw	Tool holder adjusting screw
	SCHT15 M3,5x10 SY	SCHW M6x05x33
	Locking screw	Plastics plug
	SCHW M3x4 DIN913	KST M3

★ = ex stock

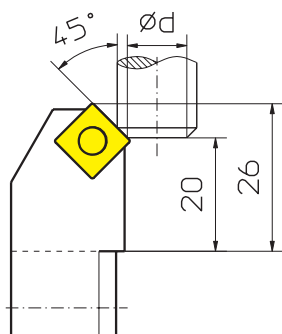
☆ = short lead time

☐ = upon request



Tool holder for chamfering EBFHA 45 ... 09SC

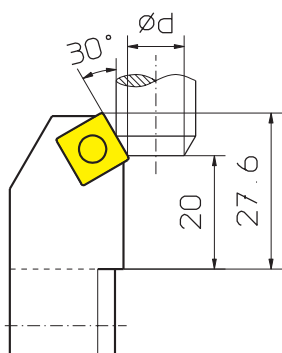
Product group 12D



Fits in tool head →	...060	...080	Dis	
Order no.	Adjustable up to diameter			
EBFHA 4501 MR 09SC	0-18	0-38	☆	
EBFHA 4502 MR 09SC	9-27	9-47	☆	
Turning inserts: see catalog group 05. Tool holder also available with indexable inserts of your choice.				

Tool holder for chamfering EBFHA 30 ... 09SC

Product group 12D



Fits in tool head →	...060	...080	Dis	
Order no.	Adjustable up to diameter			
EBFHA 3001 MR 09SC	0-18	0-38	☆	
EBFHA 3002 MR 09SC	10-28	10-48	☆	
Turning inserts: see catalog group 05. Tool holder also available with indexable inserts of your choice.				

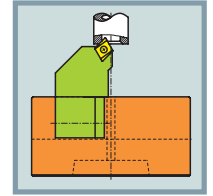
Product group 21

Spare parts	Indexable insert with clamping screw	Tool holder adjusting screw
	SCHT15 M3,5x10 SY	SCHW M6x05x33
	Locking screw	Plastics plug
	SCHW M3x4 DIN913	KST M3

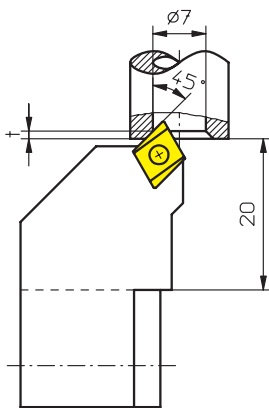
★ = ex stock

☆ = short lead time

☐ = upon request



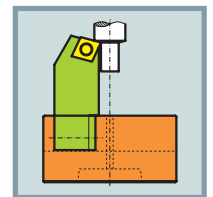
Internal chamfer tool holder EBFHI 45 ...



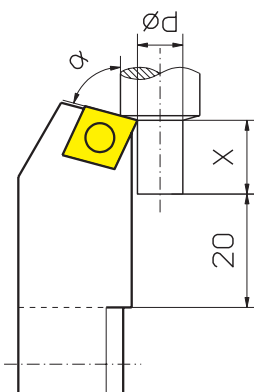
Product group 12D

Fits in tool head →	...060	...080	Size of chamfer	Dis	
Order no.	Adjustable up to diameter				
EBFHI 4501 MR 05EP	0-20	0-30	1	☆	
EBFHI 4502 MR 05EP	10-28	10-48	2	☆	
EBFHI 4503 MR 05EP	28-46	28-66	2	☆	
EBFHI 4504 MR 05EP	42-60	42-80	2	☆	

Turning inserts: see catalog group 05.
Tool holder also available with indexable inserts of your choice.



Turning tool holder EBDHX ... 09CC



Product group 12D

Order no.	Dimensions in mm			Dis	
	a	x	d		
EBDHX MR 09CC	Variable	Variable	Variable		
Price for 5 or more holders				<input type="checkbox"/>	
In your order please indicate following details:					
a = Position of insert x = Length of turning operation d = Turning diameter					

Turning inserts: see catalog group 05.
Tool holder also available with indexable inserts of your choice.

Product group 21

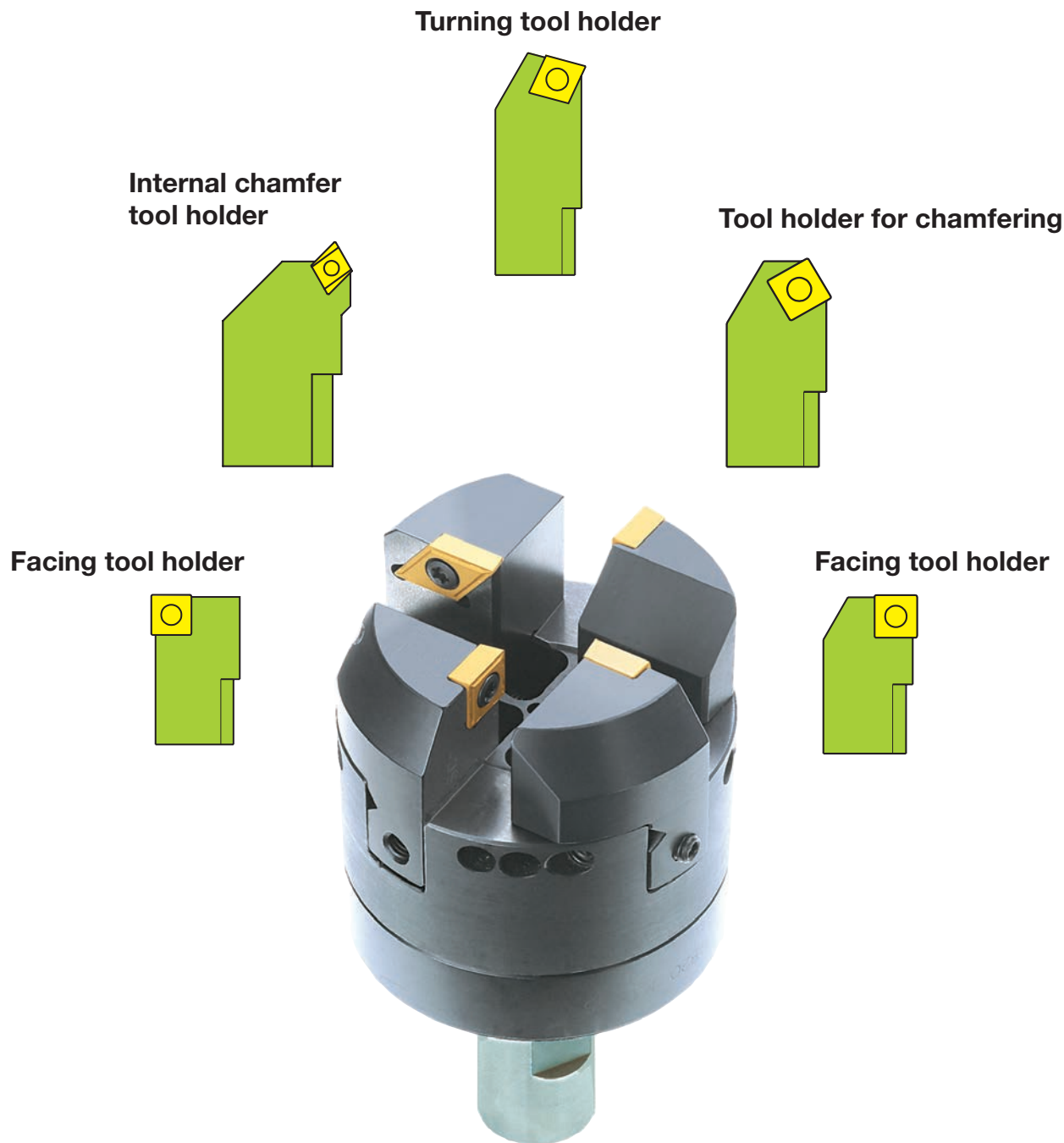
Spare parts	Indexable insert with clamping screw	Tool holder adjusting screw
	SCHT15 M3,5x10 SY	SCHW M6x05x33
	Locking screw	Plastics plug
	SCHW M3x4 DIN913	KST M3

★ = ex stock

☆ = short lead time

= upon request

Examples of tool holders



The exchangeable tool holders are ideal for many applications.