

# Recessing and end facing sliding tools system

**Mounting fixtures for  
Rotary transfer machines  
Machining centers  
Special machines**



## Custom versions also available

## Recessing and end facing sliding tools

Overview of recessing and end facing sliding tools.....	12J-3
Functional sketch .....	12J-4
Recessing and end facing sliding head single components .....	12J-5
Tool blocks .....	12J-6
Short clamping holder .....	12J-7
Recessing and end facing sliding interfaces.....	12J-8
Machine adaptors, examples .....	12J-9
Support bridge for recessing and end facing sliding head / turning heads .....	12J-10
Recessing and end facing sliding tool PSWK ... B2.....	12J-11
Machining examples .....	12J-12

Other versions and dimensions upon request.

We reserve the right to make technical modifications.

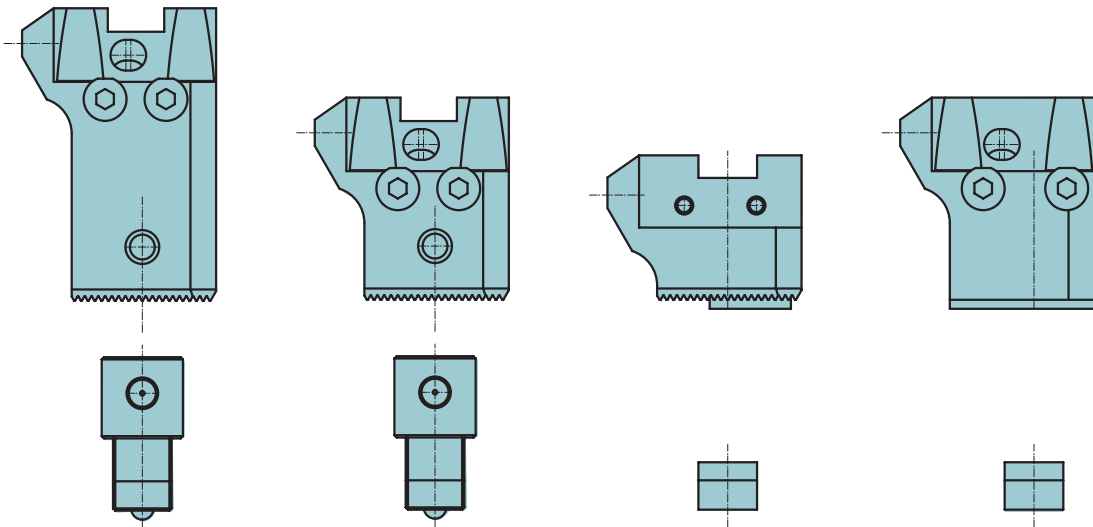
All prices are net in EURO + VAT (value added tax).

### Overview of recessing and end facing sliding tools

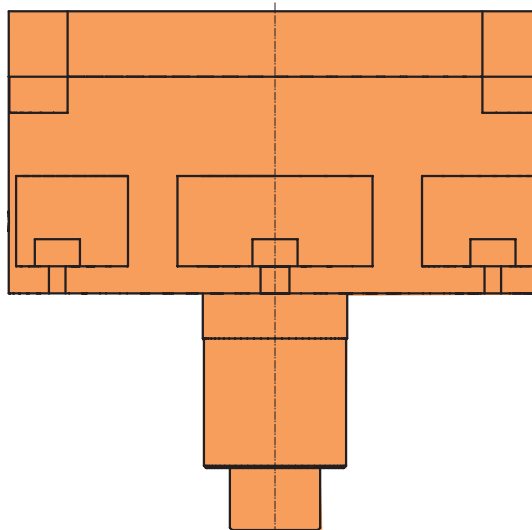
#### Form, turning and grooving tool holders



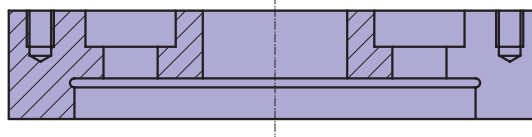
#### Tool holder blocks with cylinder clamping or T-nut



#### Recessing and end facing sliding head

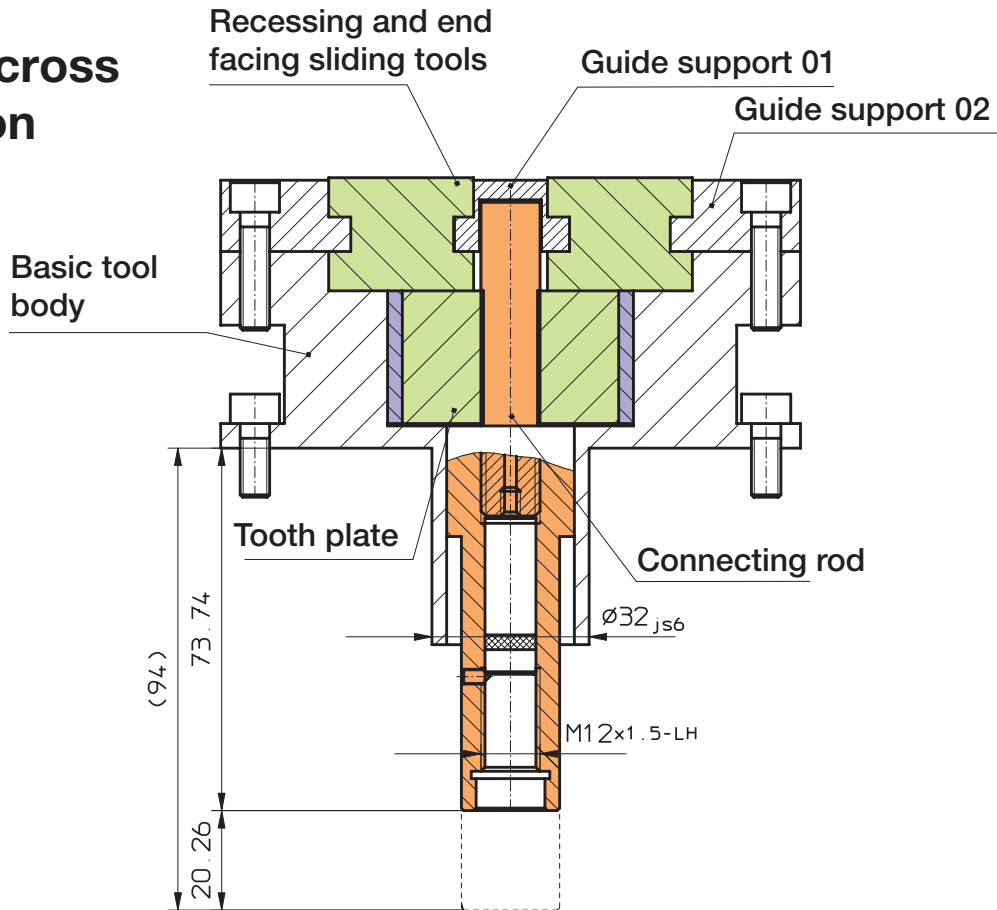


#### Machine adaptor, if required

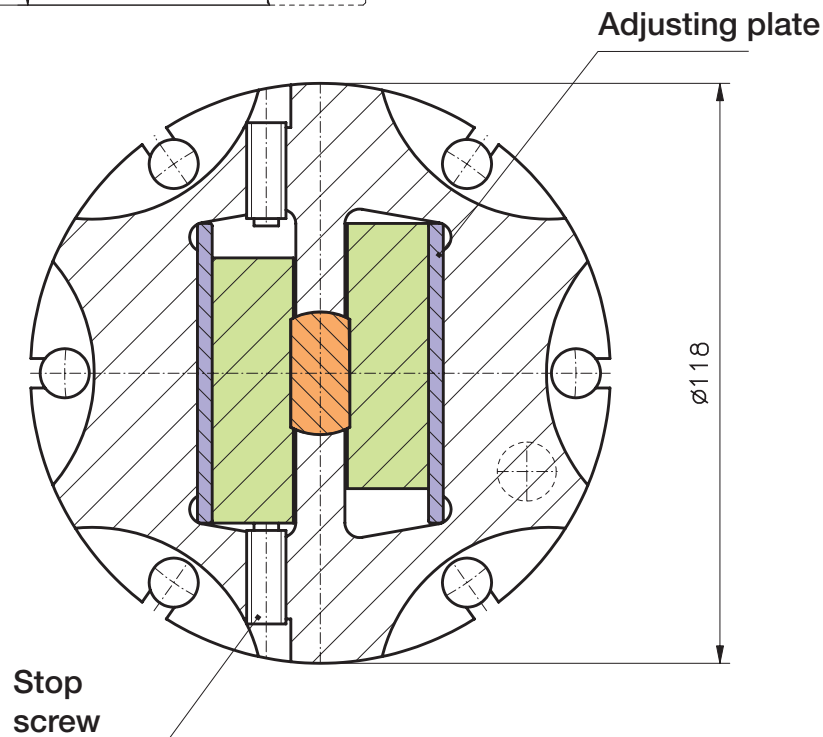


## Functional sketch

### Axial cross section



### Radial cross section



## Recessing and end facing sliding head single components



Product group 12J

Order no.	Designation	Dis	B		
PSGK 118 A2	Basic tool body	★			
PS 118 A2A	Recessing and end facing sliding head - standard	★			
PS 118 A2B	Recessing and end facing sliding head - standard	★			
PS 118 A2X	Recessing and end facing sliding head - special	☆			
PSZS 06 118 A2	Connecting rod	★			
PSZS 10 118 A2	Connecting rod	★			
PSZS 17 118 A2	Connecting rod	★			
PSZP 06 118 A2	Tooth plate	★			
PSZP 10 118 A2	Tooth plate	★			
PSZP 17 118 A2	Tooth plate	★			
PSFL 118 01	Guide support	★			
PSFL 118 02	Guide support	★			
PSPP 118 A2	Adjusting plate	★			
PSMS 118 A2	Assembly key set	★			
PSRP 118 A2	Repair	☆			
PSMA 118 A2	Machine adaptation	☆			
PSWK 118 A2	Recessing and end facing sliding head complete				

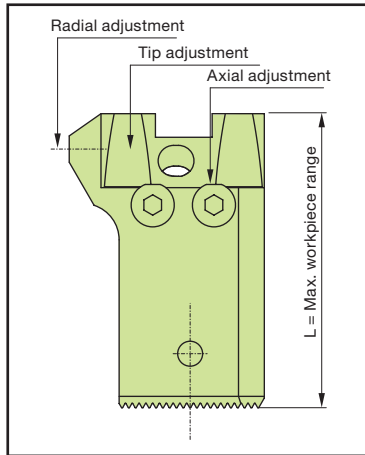
★ = ex stock

☆ = short lead time

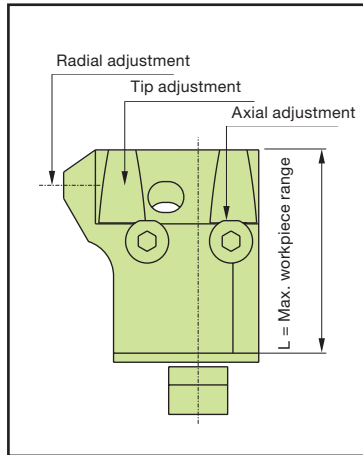
□ = upon request

## Tool blocks

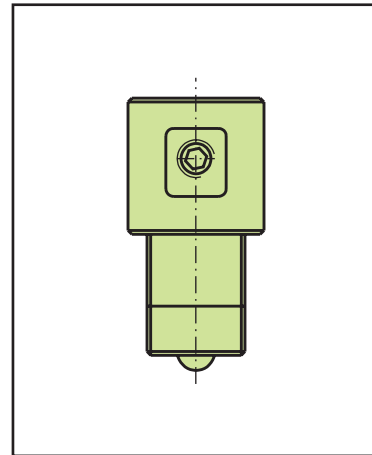
### Tool blocks A0



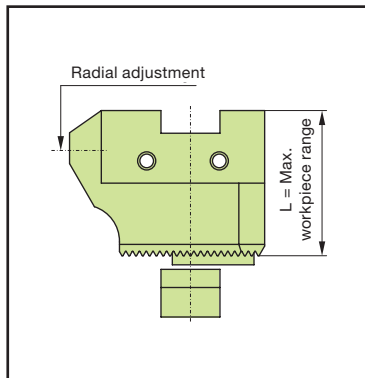
### Tool blocks B0



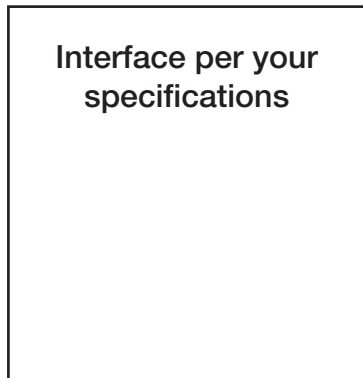
### Clamping cylinder VTS



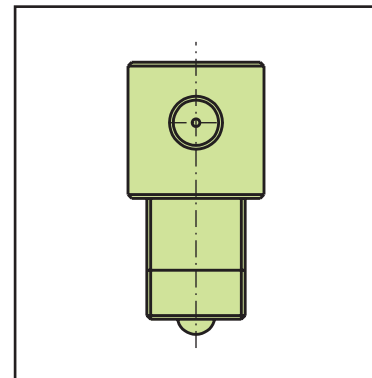
### Tool blocks A1



### Tool blocks X



### Clamping cylinder ABS



#### Product group 12J

Order no.	Designation	L	Dis	B		
PSAH A2 80 A0	Tool blocks - standard	80	★			
PSAH A2 65 A0	Tool blocks - standard	65	★			
PSAH A2 55 A0	Tool blocks - standard	55	★			
PSAH A2 45 A0	Tool blocks - standard	45	★			
PSAH A2 26 A1	Tool blocks - standard	26	★			
PSAH A2 26 B0	Tool blocks	26	★			
PSAH A2 X	Recessing and end facing sliding head - special x		☆			
PSAZ A2 18 - VTS	Clamping cylinder		★			
PSAZ A2 20 - ABS	Clamping cylinder		★			

Tool blocks also available in other lengths (L).

To reduce weight, tool blocks are also available in aluminum.

#### Product group 21

Spare parts	Clamping blocks for PSAZ	Double threaded pin
	PSSKL/R	DGM 0,5x15 N
	Stop. adjustable	Double threaded pin
	PRAE M5 L	DGM 0,5x15 N

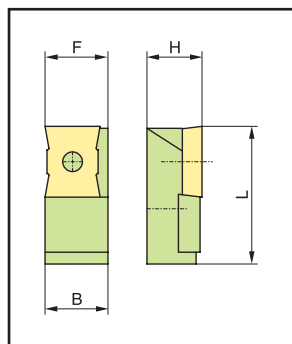
★ = ex stock

☆ = short lead time

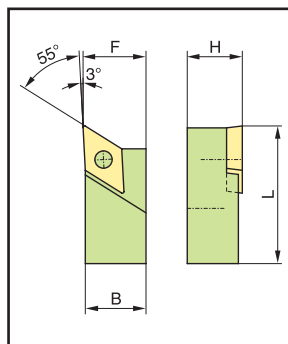
□ = upon request

## Short clamping holder

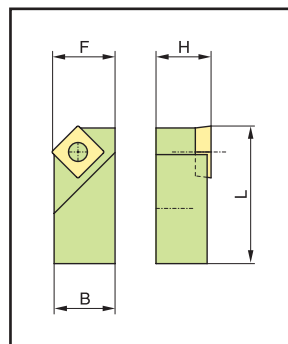
**SAGCR**



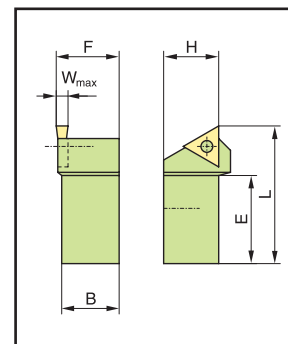
**SDJCR**



**SSSCR**



**STGCR**



Product group 12J

Order no.	Dimensions in mm					Dis	
	H	B	L	F	E		
SAGCR 1416 A1236	14	16	36	16	0	<input type="checkbox"/>	
SDJCR 1416 A1136	14	16	36	16	0	<input type="checkbox"/>	
SSSCR 1416 A0936	14	16	36	16	0	<input type="checkbox"/>	
STGCR 1416 A1136	14	16	36	16	20	<input type="checkbox"/>	
SAGCR 1616 A1236	16	16	36	16	0	<input type="checkbox"/>	
SDJCR 1616 A1136	16	16	36	16	0	<input type="checkbox"/>	
SSSCR 1616 A0936	16	16	36	16	0	<input type="checkbox"/>	
STGCR 1616 A1136	16	16	36	16	20	<input type="checkbox"/>	

For compatible Indexable inserts see catalog group 05

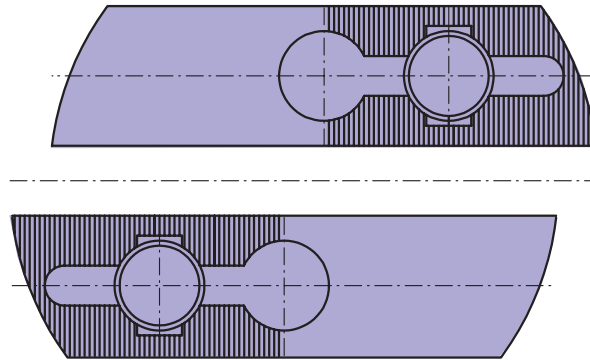
★ = ex stock

☆ = short lead time

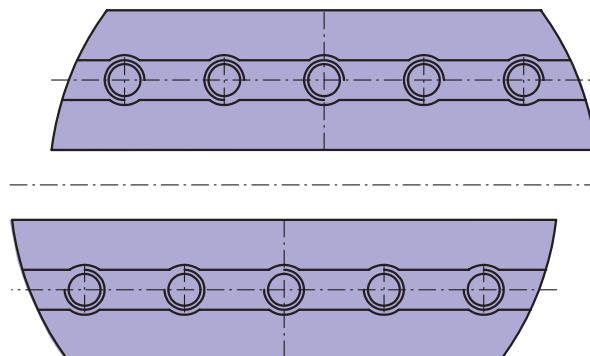
= upon request

## Recessing and end facing sliding interfaces

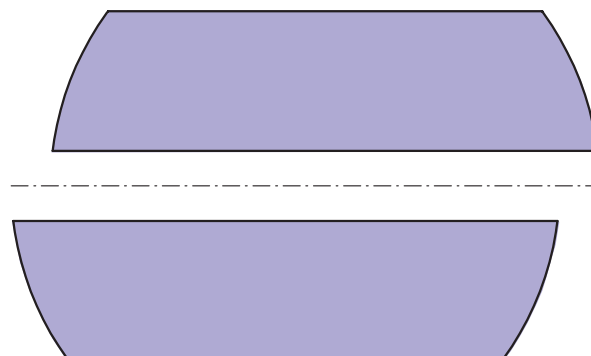
**Set of recessing and end facing sliding head with Interface A**



**Set of recessing and end facing sliding head with Interface B**



**Set of recessing and end facing sliding head with Interface X**

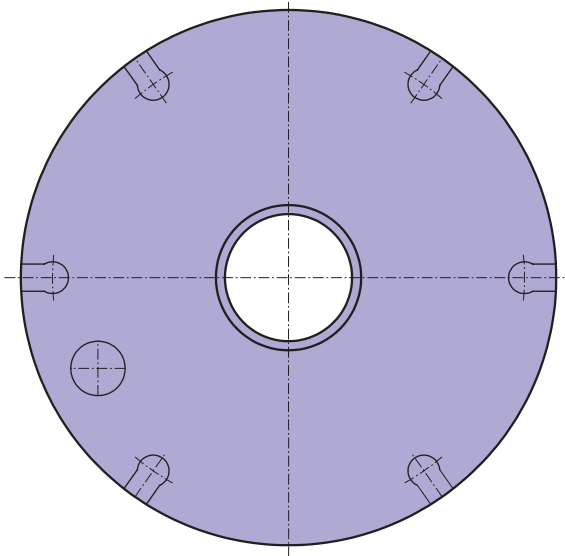


**according to your specifications**

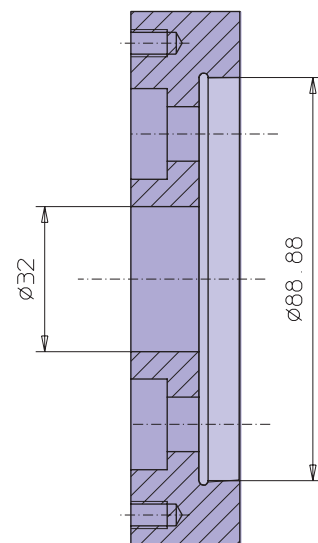
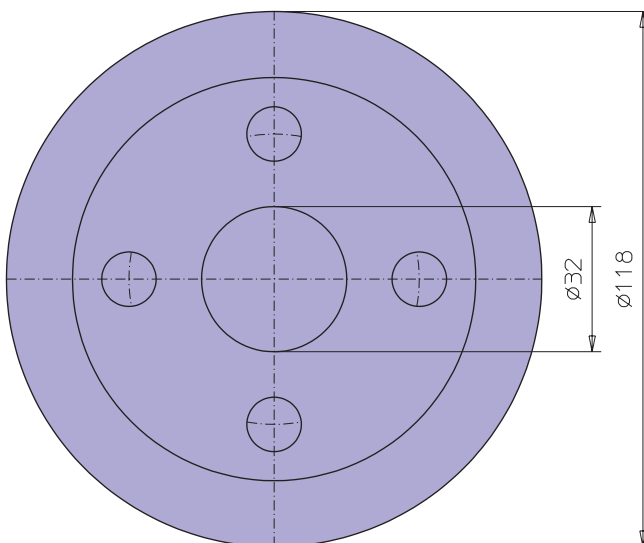


## Machine adaptors, examples

Connection of recessing and end facing sliding head to machine spindle or mounting adaptor



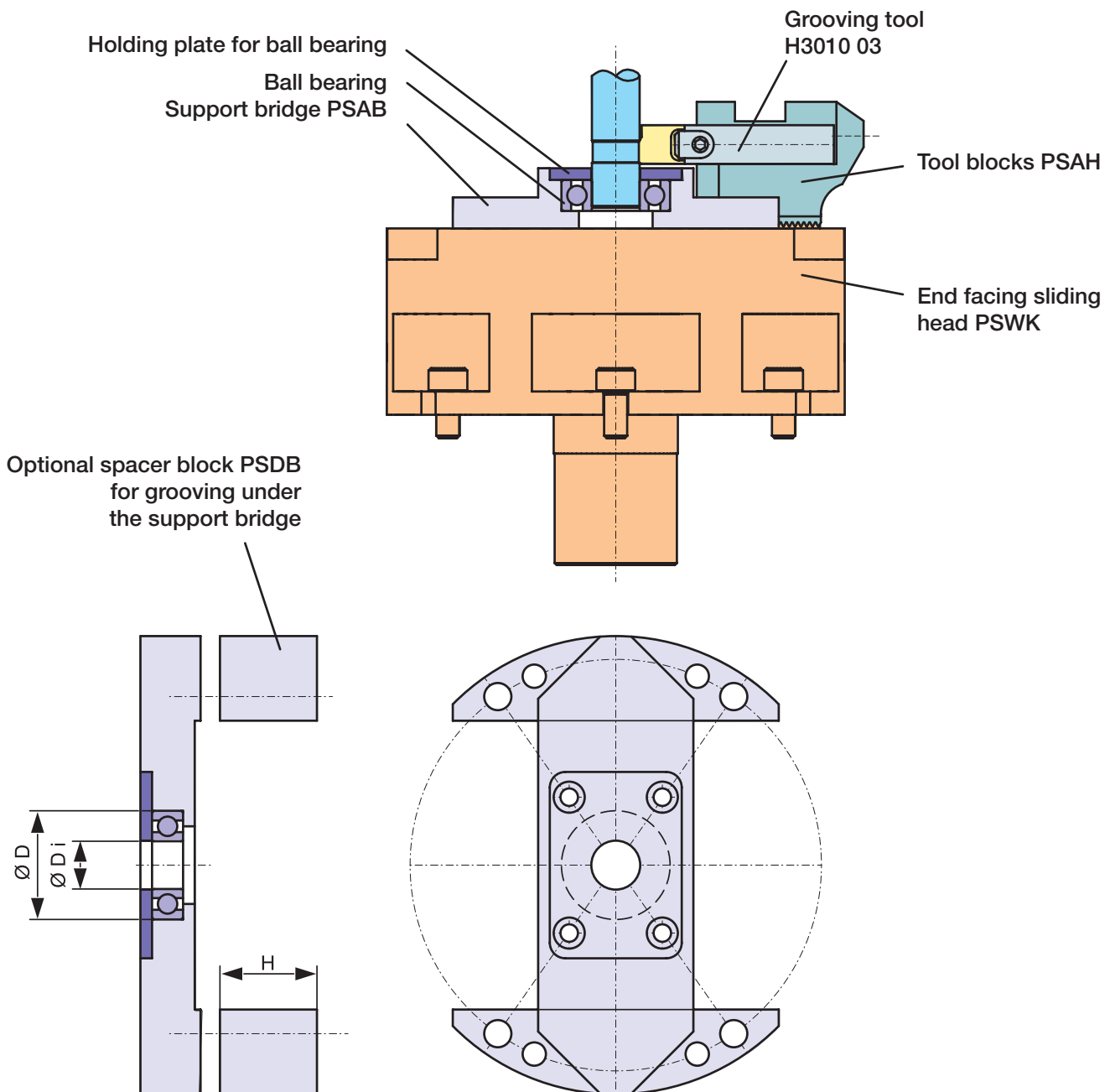
Machine adaptor PSMA 118 A2 2079 G40



Other machine adaptors upon request.

## Support bridge for recessing and end facing sliding head / turning heads

Support bridge will be matched to meet to the individual specifications.



## Recessing and end facing sliding tool PSWK ... B2



Product group 12J

Order no.	Dimensions in mm				Dis	
	Diameter					
PSWK100B2H17B	100				☆	

★ = ex stock

☆ = short lead time

☐ = upon request

## Machining examples

