

Turning head Type H



Tooling for rotary indexing machines

Turning head Type H

Schematic overview - turning head Type H	120-3
Turning heads HWDK	120-4
Machine adaptors HWMA	120-5
Support tool holder, standard - radially adjustable HWAH	120-6
Turning holder with support holder, radially adjustable	120-6
Support tool holder, standard - radially adjustable HWAH ... E.....	120-7
Turning holder with support holder, axially adjustable.....	120-7
Support bridge for recessing and end facing sliding head / turning heads	120-8
Jaw collets / clamping sleeves.....	120-9
Illustration of tool combinations	120-10

Other versions and dimensions upon request.
We reserve the right to make technical modifications.
All prices are net in EURO + VAT (value added tax).

Schematic overview - turning head Type H

Turning tool holder axially adjustable



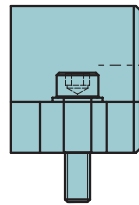
Turning tool holder



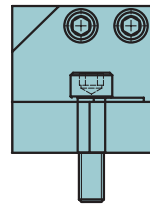
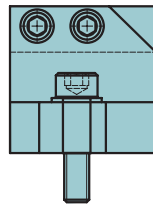
Turning tool holder axially adjustable



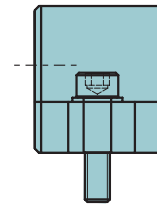
Tool blocks axially and radially adjustable



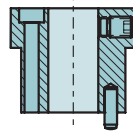
Tool blocks radial adjustable



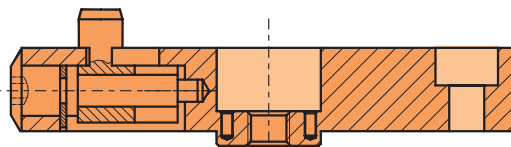
Tool blocks axially and radially adjustable



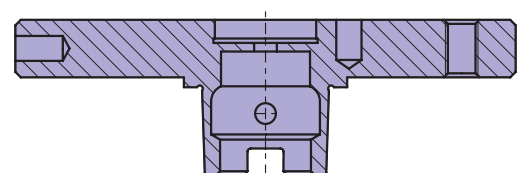
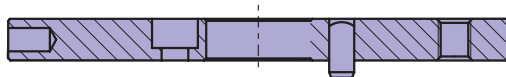
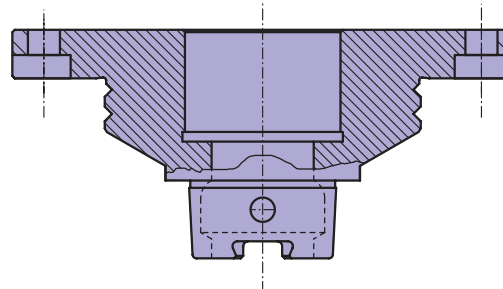
Clamping sleeve



Turning head

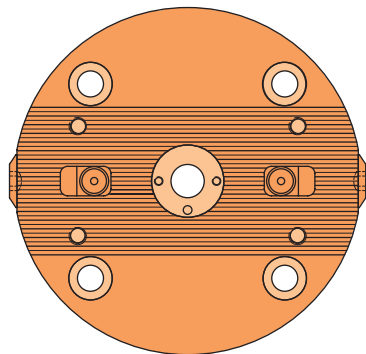


Machine adaptors

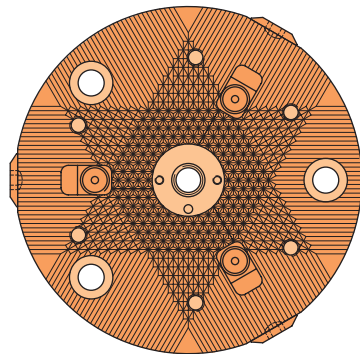


Turning heads HWDK ...

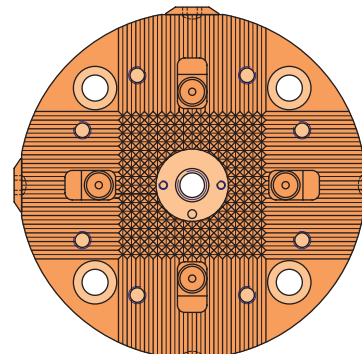
HWDK ... R2



HWDK ... R3



HWDK ... R4



Product group 120

Head size in mm	Facing Ø mm	Chamfering Ø mm	Turning length x mm
100	5-40	0-40	100
120	5-50	0-50	100
Other dimensions upon request			

Product group 120

Order no. standard	Ø D	Indexing	Adjustment travel in mm	Dis
HWDK 100 R02	100	2	5	☆
HWDK 100 R03	100	3	5	☆
HWDK 100 R04	100	4	5	☆

Order no. standard	Ø D	Indexing	Adjustment travel in mm	Dis
HWDK 120 R02	120	2	12	☆
HWDK 120 R03	120	3	12	☆
HWDK 120 R04	120	4	12	☆

Product group 21

Spare parts	Adjustment link complete	Cylinder pin
	SKKS-M08x0,5-LH	ZYD D06x20

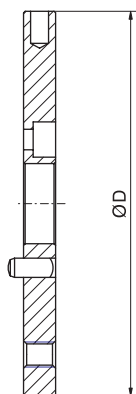
★ = ex stock

☆ = short lead time

☐ = upon request

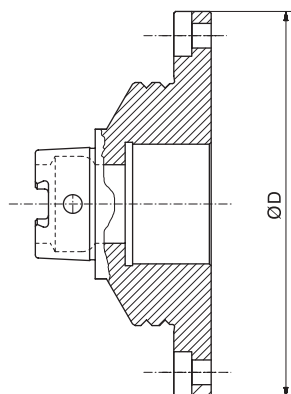
Machine adaptors HWMA ...

Product group 120



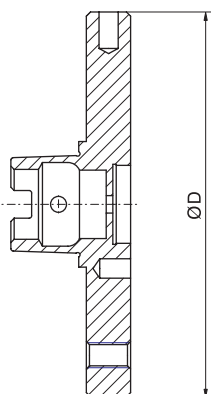
Machine adaptors HWMA - neutral				
Order no.	D	L	Dis	
HWMA 100 N	100		☆	
HWMA 120 N	120		☆	

Product group 120



Machine adaptors HWMA HSK40C with balancing ring				
Order no.	D	L	Dis	
HWMA W 100 HSK40C	100		☆	

Product group 120



Machine adaptors HWMA - HSK				
Order no.	D	L	Dis	
HWMA 100 HSK 40C	100		☆	
HWMA 120 HSK 40C	120		☆	

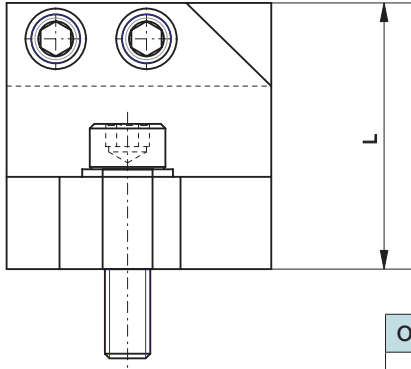
Other machine adaptors upon request.

★ = ex stock

☆ = short lead time

□ = upon request

Support tool holder, standard - radially adjustable HWAH ...



Right-hand version shown - also available in left-hand version.

Product group 120

Order no.	Dis	
HWAH 35 R	☆	
HWAH 40 R	☆	
HWAH 45 R	☆	
HWAH 50 R	☆	
HWAH 55 R	☆	
HWAH 60 R	☆	
Turning tool holder and Indexable inserts see Product information 05.		

Turning holder with support holder, radially adjustable



Turning tool holder: see ISO turning tools, product information 05.

Product group 21

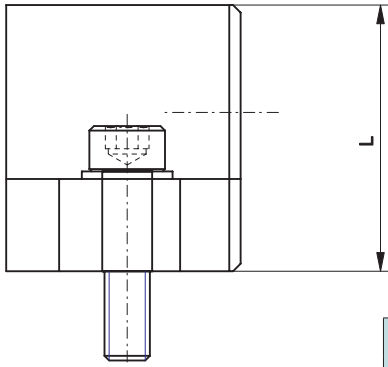
Spare parts	Tool holder clamping screw	Adjusting screw
	SCHW M08x12 DIN914	SCHW M06x12 DIN913

★ = ex stock

☆ = short lead time

☐ = upon request

Support tool holder, standard - radially adjustable HWAH ... E

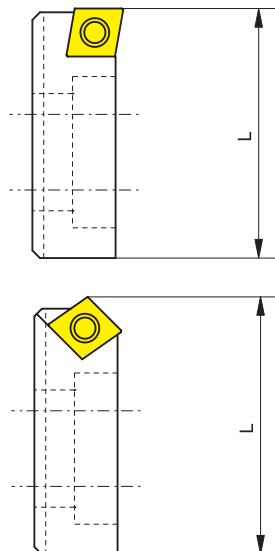


Center height axially adjustable.

Product group 120

Order no.	Adjustable up to diameter			Dis
	HWAH 35 E 45			
HWAH 45 E 55			☆	
HWAH 55 E 65			☆	
			☆	
ISO holder and indexable inserts: see Product information 05 - ISO turning tools.				

Turning holder with support holder, axially adjustable



Product group 120

Order no.	Adjustable up to diameter			Dis
	HWDH 35 E 45			
ISO holder and indexable inserts: see Product information 05 - ISO turning tools. Tool holder also available with indexable inserts of your choice.				

Product group 21

Spare parts	Tool holder clamping screw	Clamping screw	Adjusting screw
	SCHW M08x12 DIN914	SCHW M03x05 DIN914	SCHW M05x19 DIN913-60G

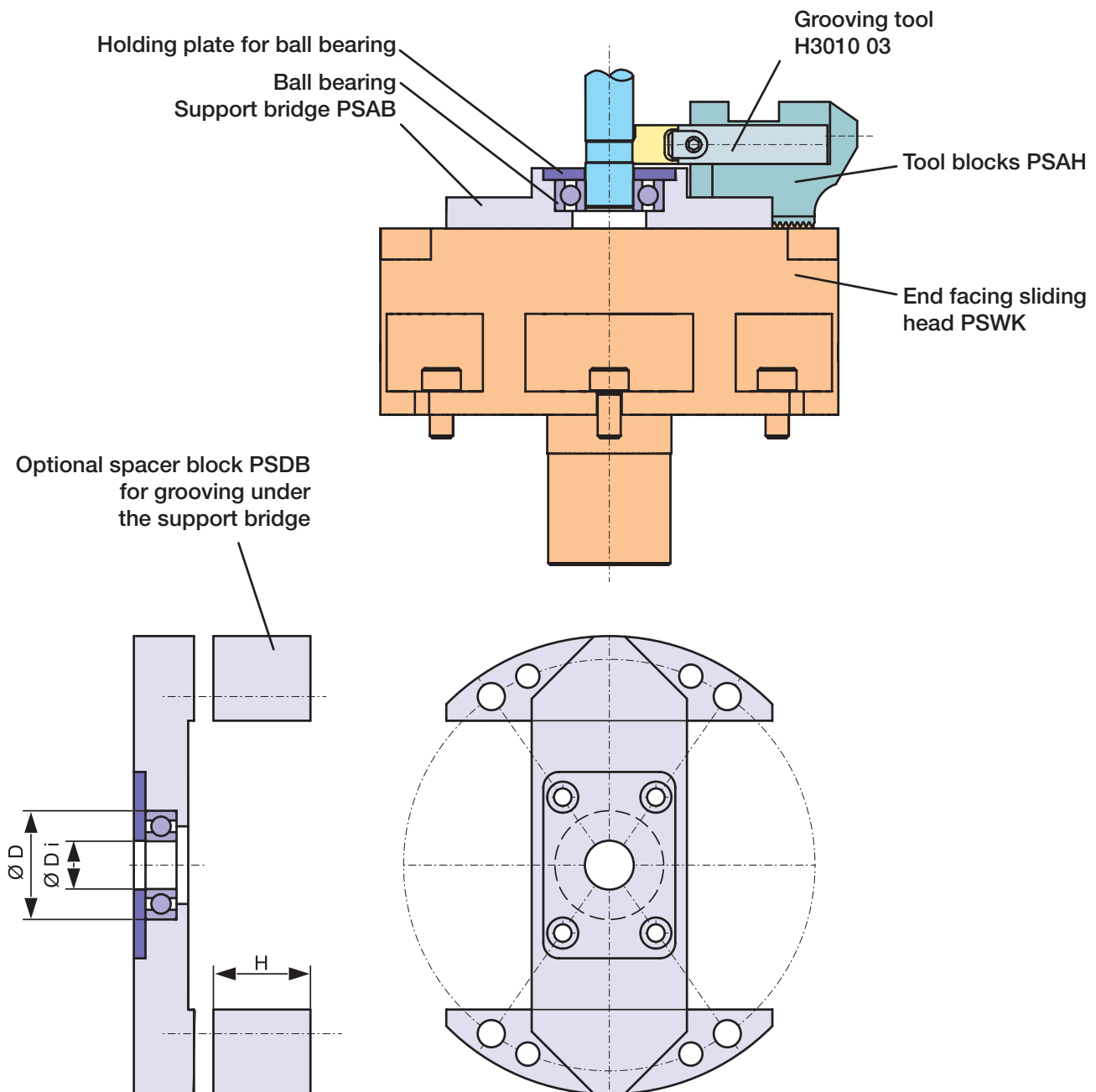
★ = ex stock

☆ = short lead time

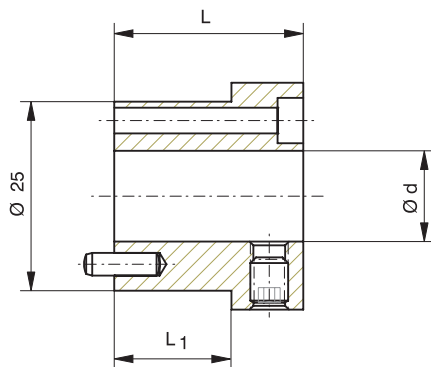
☐ = upon request

Support bridge for recessing and end facing sliding head / turning heads

Support bridge will be matched to meet to the individual specifications.



Jaw collets / clamping sleeves



Product group 120

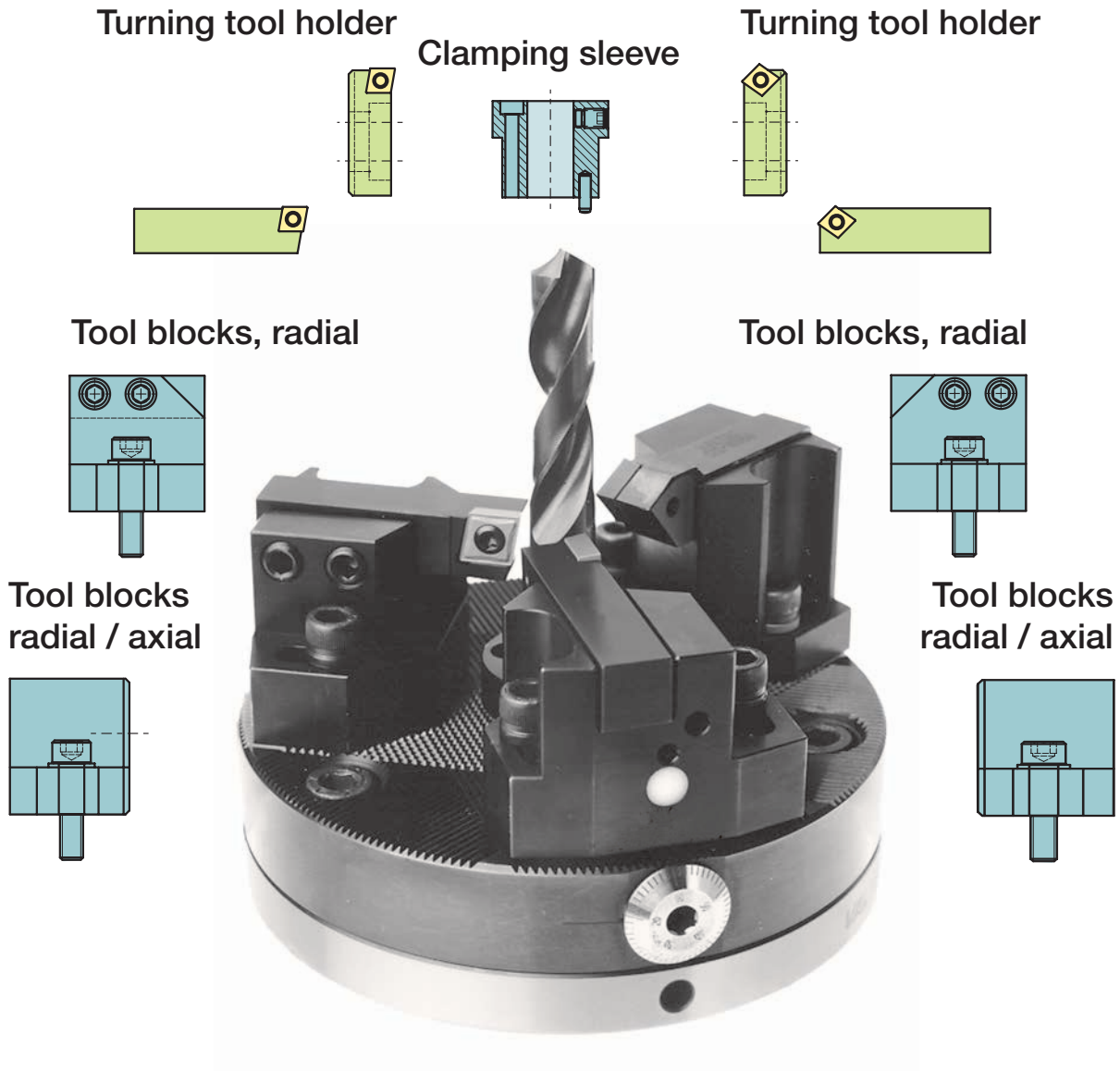
Order no.	d ₁	L	L ₁	Dis	
HWSH 14	14	25	16	☆	
HWSH 16	16	25	16	☆	
HWZA ER 16	16	25	16	☆	
HWSH 14	14	25	16	☆	
ISO holder and indexable inserts: see Product information 05 - ISO turning tools.					

★ = ex stock

☆ = short lead time

☐ = upon request

Illustration of tool combinations



Tooling for rotary indexing machines